

Lancashire County Council

Rationalisation of Household Waste Recycling Centres

Consultation Review July 2011



Contents

1.0	Executive Summary and Recommendations	2
2.0	Background	3
3.0	Introduction	4
4.0	Assessment of Closure Options	
4.1	Lancaster	6
4.2	Wyre	8
4.3	West Lancashire	10
4.4	Ribble Valley	12
4.5	Hyndburn	14
4.6	Rossendale	16
4.7	Pendle	18
5.0	Consultation	20
6.0	Appendices	
	Appendix 1 - HWRC tonnages in Lancashire	
	Appendix 2 - Comparisons Table	
	Appendix 3 - Lancashire's HWRC Network and Routes Map	
	Appendix 4 - Population Maps	

Author: Steve Scott
Head of Waste Management
Lancashire County Council

1.0 Executive Summary and Recommendations

In February 2011, as part of the authority's budget planning process, Lancashire County Council took the decision to further rationalise the network of Household Waste Recycling Centre's (HWRC's) provided by the authority by closing four facilities. The closures will reduce operating costs and make better use of the remaining 15 facilities making the network more cost effective.

It is accepted that closures will have an impact on the local communities which they serve. However, it is not cost effective to provide two facilities in districts where the waste generated can be accommodated at one HWRC or where there are alternative suitable facilities relatively close by.

This rationalisation has reviewed Lancashire County Council's HWRC network on the basis of providing at least one HWRC per district. Thereafter, the remaining facilities have been evaluated using information on the tonnages they receive, property related factors and the affects that the closure of each facility would have on the population (households) of a district as a whole.

On this basis the report recommends the closure of the following Household Waste Recycling Centres :

- **Garstang**
- **Great Harwood**
- **Bacup**
- **Colne**

The closure of the Bacup HWRC is predicated upon the resolution of the leasing arrangements for Haslingden HWRC. In the event that this cannot be resolved it would be recommended that Haslingden HWRC is closed instead of Bacup.

The report also recommends that consideration is given to the further refinement of the network in the future by the replacement of the Saltayre and Keer Bridge HWRC's in Lancaster and the Longridge and Clitheroe HWRC's in Ribble Valley with one HWRC in each district, should it prove financially viable to do so, and suitable sites be identified.

In the assessment of closure options this review has endeavoured to ensure that as many households as possible in each District remain within 6 miles of a HWRC. This aim has to be evaluated alongside the tonnages which are delivered to each facility and other factors such as the alternative facilities that householders can use. For example, there are some facilities that could close instead of those recommended that would allow a greater percentage of households to remain within 6 miles of another HWRC. However, other factors have also been considered and on balance a judgement has been made as to which site to recommend for closure.

On this basis the recommendations have the following impacts:

HWRC (District)	Percentage (and number) of households in District <u>more than</u> 6 miles from a HWRC following closure	Nearest alternative facility (Distance from HWRC)
Garstang (Wyre)	14.60% (7493)	Preston (8.4 miles) - split level HWRC with better access and facilities
Gt Harwood (Hyndburn)	Nil	Altham (2.5 miles) - split level HWRC with better access and facilities
Bacup (Rossendale)	11.03% (3482)	Haslinden (5.8 miles) - single level HWRC with same access and facilities
Colne (Pendle)	0.03% (12)	Burnley (4.4 miles) - brand new split level HWRC with better access and facilities

It is clear that some of the closures will impact more than others - particularly Garstang and Bacup. However, this report highlights that these closures will least affect the population as a whole in each of the Districts reviewed and will provide the best continuity for Lancashire County Council's HWRC service.

In all, should these recommendations be adopted, 3% of households in Lancashire will now be more than 6 miles from a HWRC in comparison to 1% before the closures.

2.0 Background

The number and location of HWRC's in Lancashire is based largely on a variety of historical factors, with many of the facilities having operated since the 1970's and many also being located for convenience in the vicinity of old landfill sites (for the original purpose of quick disposal of rubbish to landfill) or at former Council depots.

The result being that there are more facilities provided in some areas than others. In some cases two or three have been provided in areas which collectively generate less customer visits than are comfortably accommodated by just one facility in others.

The nature of HWRC facilities has changed dramatically in recent years with a move to a use predominantly as recycling centres. The introduction of kerbside recycling and green waste collections to over 90% of properties in Lancashire has also shifted the emphasis of the HWRC's to recycling items not collected at doorstep.

Lancashire does enjoy a very high standard of doorstep collection services. These are also resource intensive and householders should be encouraged to utilise these as the first point for managing their rubbish and in particular recycling. The HWRC's are not intended to be used on a frequent basis for wastes that are already collected at the doorstep and as such, the majority of visits that householders make to HWRC's should be for bulky or larger items (e.g. wood, scrap metal etc). These items are not usually produced on a weekly or often even monthly basis and, therefore, the need for any householder to visit a HWRC should only be on an occasional basis.

During 2008/09, alongside the preparation of Lancashire's Municipal Waste Management Strategy 'Rubbish to Resources', a review began of all Household Waste Recycling Centres. The review was carried out by independent technical consultants, who assessed the existing 23 HWRC's to examine whether the distribution and location of sites was suitable, operationally effective and represented value for money. The review also included recommendations for the optimum number and distribution of HWRC's, including the redevelopment, relocation or closure of individual HWRC's where appropriate.

Amongst other efficiencies the review recommended the closure of four HWRC's in St Annes, Langho, Padiham and Rufford. The Deputy Leader of the County Council approved these recommendations on the 7 June 2010.

In February 2011, as part of the authority's budget planning process, Lancashire County Council took the decision to further refine the network of HWRC's by closing a another four facilities leaving 15 HWRC's. The closures will result in financial savings through efficiency and whilst still retaining a network of facilities well able to cope with demand and well placed to serve the needs of local communities.

It is accepted that any HWRC closures will have an impact on the communities which they serve. However, it is unnecessarily more expensive to provide an HWRC where another facility can reasonably accommodate the amount of waste generated in a district or where other facilities are available nearby. To this end, Lancashire County Council has carried out a preliminary Equality Analysis which will be reviewed on conclusion of the consultation which ends at 5pm on 30th September 2011.

3.0 Introduction

The purpose of this report is to consider which four HWRC facilities should be recommended for closure on the basis that their closure will least affect the residents of each District and Lancashire as a whole, and provide the best continuity and standards of service for Lancashire County Council.

In order to do so this review will consider the following primary factors;

Tonnage: Details of all of Lancashire's HWRC tonnages are summarised in Appendix 1. The average amount of waste accepted at each facility over the last 3 years has been calculated and is presented in Appendix 2. In order to allow for fluctuations in annual tonnages the 3 year average has been used for the basis of assessment in this report.

Property: The size, suitability and accessibility of facilities and any other property issues.

Number of households: The number of households affected by any given closure and their locality to any other HWRC facility. Maps showing the affects of closure of each facility are provided in Appendix 4 and these form the basis for the population (households) information presented in tables under each district. Whilst it may not always be the case, for the purpose of this review it has generally been assumed that most households currently use the closest available HWRC.

Lancashire County Council does not have any specific formal policy on the number or location of HWRC's that will be provided. However, the Council's preference is to keep the majority of households as close to a HWRC as possible. For the purpose of evaluation this report assesses the impacts of each potential HWRC closure on the number of households that would be within 6 miles of, or subsequently more than 6 miles from, a HWRC.

Other considerations: Any other factors that need to be considered in the process.

A table of comparisons of HWRC's is provided to assist in the evaluation process in Appendix 2.

Appendix 3 details Lancashire's existing HWRC network and routes between facilities. For the purpose of consistency the shortest realistic route has been used as calculated by Google Maps. A detailed traffic analysis has not been conducted as in most cases it is impossible to be sure which alternative HWRC's householders may use. However, consideration has been given to traffic generation and access to the facilities throughout the report.

In the first instance, Districts which currently only have one HWRC servicing the District will immediately be discounted from the evaluation. This therefore precludes Preston, South Ribble, Chorley, Burnley and Fylde. These are generally heavily utilised HWRC's in any case, as can be seen from the tonnages in Appendix 1, and would therefore not be considered viable for closure under the terms of this review.

As such, the remaining HWRC's that could be considered for closure are as follows;

- Lancaster - Lancaster, Carnforth
- Wyre - Fleetwood, Garstang
- West Lancashire - Burscough, Skelmersdale
- Ribble Valley - Longridge, Clitheroe
- Hyndburn - Great Harwood, Altham
- Rossendale - Haslingden, Bacup

- Pendle - Colne, Barnoldswick

This report is intended to provide recommendations on which facilities should close based upon the statistical and operational information presented, and it is the intention of Lancashire County Council to consult with District, Town and Parish Council's in respect of these recommendations. Comments received from residents during this process will also be considered before any final decision on the closures is made.

4.0 Assessment of closure options

Lancaster District

Lancaster has a population of approximately 140,000 and there are 66,358 residential properties within the District. The two HWRC's are located at Saltayre in Lancaster and Keer Bridge in Carnforth which receive a combined tonnage of 21,487 tonnes.

During the original HWRC review the Carnforth HWRC was outlined as a potential facility for closure. However, it was considered during the overview and scrutiny process that the impacts of closing either HWRC in Lancaster would be too great and consideration should be given to replacing both facilities with one bigger site.

The capital requirements for building an alternative facility are such that this would negate any potential efficiency saving. As such, for the purpose of this review, the primary intention for which is to establish budget savings through efficiencies in the network, this suggestion will only be commented upon and the two Lancaster facilities will be assessed on the same basis as the others.

	Tonnage received	Area of facility (m ²)	In the event of closure no. of households within 'x' miles of a HWRC			
			4 Miles	6 Miles	8 miles	10 miles
Lancaster	15,353	3,720	8,354 12.59%	23,612 35.58%	57,130 86.09%	66,279 99.88%
Carnforth	6,134	4,203	54,369 81.93%	60,633 91.37%	63,845 96.21%	65,357 98.49%

Saltayre HWRC, Lancaster

Saltayre HWRC is the second busiest of all of Lancashire's HWRC's accepting in the region of 15,353 tonnes of waste per year which equates to approximately 307,000 visits (see Appendix 3). The facility is very busy at all times even during week days which is unusual in comparison to the majority of facilities.

The site has access from the A5273 Ovangle Road and an entrance road to the facility which also accesses a privately operated landfill site. The number of visits to the facility often means that at busy times access to the HWRC is restricted, with cars queuing on the entrance road causing access problems to the landfill site.

At peak times traffic can queue back to the A5273 causing congestion on the highway and access problems to other local amenities such as a nearby leisure centre.

Saltayre is a split level HWRC which provides convenient use for the public for most containers (no need to climb steps) and has a separate area for vehicles to service the majority of the containers. Whilst the overall area of the site is sufficient the vehicle manoeuvring area takes up a significant amount of space and as such the public area's of the site are quite small considering the number of visits the facility receives.

The Saltayre site along with the adjacent landfill site is owned by Lancaster City Council and is held under lease by Lancashire County Council until 2017. There is no indication at this stage if it would be Lancaster City Council's intention to extend the lease beyond this date.

84% of households in Lancaster are already nearest to Saltayre HWRC. In the event of it's closure the majority of households would use Keer Bridge HWRC which is a distance of 7.8 miles from Saltayre. Only 35% of households in Lancaster would be within 6 miles of a HWRC in this event. An extremely small number of households would be closer to Fleetwood and Garstang HWRC's and therefore possibly already use those facilities.

Keer Bridge HWRC, Carnforth

Keer Bridge HWRC receives in the region of 6134 tonnes of waste per year. However, it is commonly accepted that some of the waste delivered into Keer Bridge is generated from outside of Lancashire and delivered by Cumbrian residents. Previous research has estimated this to be in the region of 25% of the waste accepted at the facility (1525 tonnes).

Lancashire County Council does not have policies which prevent this additional waste being received from domestic vehicles as they would be particularly difficult to enforce operationally. However, permits for use of the facilities in commercial vehicles are not issued to households outside Lancashire's boundary. It is difficult to ascertain how much of the 1525 tonnes would be displaced back to Cumbrian facilities should Carnforth be closed. Any reduction in tonnage though would naturally also create additional savings but due to the pricing structure of the HWRC contract it is not possible to accurately calculate any financial saving in this respect.

Keer Bridge is a split level facility like Saltayre and a large part of the site area is dedicated to service vehicles but the site is more than suitably sized to accommodate the number of visits it receives and is not commonly congested. Access to the HWRC is from the A6, Carnforth Road and this is adequate for the facility. The site is owned by Lancashire County Council.

Only 16% of the households in the District are located nearest to Keer Bridge however in the event of its closure 91.37% of households would still be within 6 miles of a HWRC.

Due to it's location to the north of the district and the fact that Cumbrian residents travel south into Lancashire from outside of the district it would be anticipated that all of these households would use Saltayre.

Summary and evaluation

Due to the relatively small number of households that would be affected by the closure of Keer Bridge it is not considered that its closure would have a significant impact on the residents of the District as a whole. Its closure would also potentially generate improved performance and increased savings for Lancashire County Council as a result of any reductions in waste received from outside of the county.

However, the Saltayre facility is already too small for the amount of visits which are made to it and this causes congestion within the HWRC and, at busy times, can cause nuisance to neighbouring properties and road users. It could not reasonably accommodate the additional visits that would be brought about as a result of the closure of Keer Bridge.

The closure of Saltayre would leave almost two thirds of the District more than 6 miles from a HWRC and could potentially generate over a quarter of a million additional car journeys into Carnforth.

A solution to the property, congestion and traffic problems at Saltayre would be through the provision of a new bigger facility. Any new facility should be designed to accommodate additional waste from Keer Bridge in order that the highlighted benefits of the closure of this facility could be achieved. The revenue savings from the closure of two facilities and the replacement with one would finance the construction of the new facility on a 'break even' basis. However, this solution cannot be considered for the purpose of this review as it does not provide a revenue budget saving.

Recommendation:

It is recommended that neither Saltayre nor Keer Bridge HWRC's are closed as part of this review.

However, future consideration should be given - separately to this review - to the further refining and improvement of the HWRC network by replacement of both facilities with a new HWRC which better accommodates the number of visits and tonnages generated in the district.

Wyre

Wyre has a population of approximately 111,000 and there are 51,308 residential properties within the District. The two HWRC's are located in Fleetwood and Garstang and receive a combined tonnage of 12,117 tonnes.

	Tonnage received	Area of facility (m ²)	In the event of closure no. of households within 'x' miles of a HWRC			
			4 Miles	6 Miles	8 miles	10 miles
Fleetwood	8,669	2,709	6,553 12.77%	9,497 18.51%	18,707 36.46%	36,173 70.50%
Garstang	3,448	1,896	36,174 70.50%	43,815 85.40%	47,248 92.09%	51,308 100%

Fleetwood HWRC

Fleetwood HWRC is the second busiest of the HWRC facilities being considered as part of this review and receives in the region of 8669 tonnes per year.

The facility is located on Jameson Road which provides suitable access from the main highway. The HWRC is single level (meaning customers must climb steps to access the majority of the containers) and for safety reasons the facility must close the gates to customers whilst containers are serviced. This can be for up to 20 minutes which in turn can lead to queues forming. The main access to the HWRC is shared with a privately operated landfill site however at the majority of times this is still accessible when vehicles are queuing. There is very little additional through traffic on Jameson Road.

83% of households in Wyre are already nearest to Fleetwood HWRC. In the event of it's closure the majority of households would need to use either Lytham or Garstang HWRC's which are distances of 14.7 and 15.6 miles from Fleetwood respectively. Only 18.51% of households in Wyre would be within 6 miles of a HWRC in this event.

Garstang HWRC

Garstang HWRC accepts 3,448 tonnes of waste per year. In tonnage terms it is one of the quietest HWRC's in Lancashire.

The HWRC is located on Cloughton Industrial Estate south of Garstang town centre and a short distance from the main A6 Preston to Lancaster road. The site is owned by Lancashire County Council and is suitable in size for the number of visitors that use it.

The HWRC is single level and for safety reasons the facility must close the gates to customers while containers are serviced. This does cause some queuing outside the facility which in turn can affect access to the industrial estate. However, the number of visitors on weekdays when the industrial estate is at it's busiest is quite small and as such the queuing traffic does not impact too heavily.

Only 16% of households in Wyre are closest to Garstang HWRC. In the event of it's closure 85.40% of households in Wyre would still be within 6 miles of a HWRC. The majority of householders would likely use the closest alternative HWRC which is in Preston – 8.4 miles away. Some households are closer to the facilities in Fleetwood, Lancaster and Longridge however the routes to these facilities may still favour use of the Preston HWRC.

It should also be noted that the Preston HWRC is considered Lancashire County Council's 'flagship' facility. The site is extremely large and can easily accommodate additional visitors. The site is split level and queuing is extremely infrequent due to its design and other operational features that make depositing rubbish easier and quicker.

Summary and evaluation

The location of Fleetwood HWRC, the tonnage received and the number of households that it serves in Wyre realistically discount the HWRC from consideration of closure as part of this review.

Garstang HWRC is one of the quietest facility that Lancashire County Council provides and on average accepts less waste, and subsequently visitors, than all but three of the HWRC's being considered as part of this review. Due to the relatively small number of households that would be affected by its closure it is not considered that the closure of this facility would not have a significant impact on the residents of the District as a whole. In addition, a greater percentage of households (85.40%) will still be within 6 miles of a HWRC than would result from the closure of either HWRC (80%) in neighbouring Ribble Valley which has comparable facilities.

Recommendation: That Garstang HWRC is closed.

West Lancashire

West Lancashire has a population of approximately 110,000 and there are 50,634 residential properties within the District. The two HWRC's are located in Burscough and Skelmersdale and receive a combined tonnage of 13,084 tonnes. It is anticipated that the tonnages received by the two facilities will increase following the closure of Rufford HWRC in April 2011 which itself previously received 4,300 tonnes per year.

	Tonnage received	Area of facility (m ²)	In the event of closure no. of households within 'x' miles of a HWRC			
			4 Miles	6 Miles	8 miles	10 miles
Burscough	5,451	2,843	34,905 68.94%	45,587 90.03%	47,970 94.74%	50,628 99.99%
Skelmersdale	7,633	2,015	28,030 55.36%	46,090 91.03%	50,632 100%	50,634 100%

Burscough HWRC

Burscough HWRC receives approximately 5451 tonnes of waste per year however it is anticipated this will increase following the recent closure of Rufford HWRC.

The facility is located just off the main A59 Liverpool Road on Abbey Lane. The facility is suitably sized and accessible although traffic can sometimes encounter difficulty after exiting the facility when turning right onto the busy A59.

The HWRC is single level and for safety reasons the facility must close the gates to customers while containers are serviced which can, at busy times, affect access by other traffic to neighbouring industrial units. The site is owned by Lancashire County Council.

Households in West Lancashire are evenly distributed between Burscough (45%) and Skelmersdale HWRC (47%) which are 5.3 miles apart. 8 % of households in the district are nearer to the Farington and Chorley HWRC's. Due to the close proximity of the two HWRC's 90% of households in West Lancashire would still be within 6 miles of a HWRC in the event of closure of Burscough HWRC.

As previously mentioned the Rufford HWRC which was located 4.4 miles from Burscough and 7.9 miles from Skelmersdale HWRC's closed in April 2011. Rufford previously received in the region of 4,300 tonnes a year. It is impossible to assess at this stage which HWRC facilities householders that would have used Rufford will now visit but inevitably both Burscough and Skelmersdale will be impacted in this respect.

Skelmersdale HWRC

Skelmersdale HWRC receives approximately 7633 tonnes of waste per year but, like Burscough, it is anticipated that this will increase following the recent closure of Rufford HWRC.

The facility is located on the B5068 Glenburn Road and is accessed directly via a short feed road from a roundabout. The HWRC is single level and for safety reasons the facility must close the gates to customers while containers are serviced which, at busy times, does result in traffic queuing on the roundabout to access the HWRC.

The facility is small in respects of the quantity of waste and number of customer visits that it receives and can be quite congested. By comparison, for example, it is smaller than both Altham and neighbouring Burscough both of which receive significantly lower tonnages. The site is owned by Lancashire County Council.

Again, due to the close proximity of Burscough HWRC 91% of households in West Lancashire would still be within 6 miles of a HWRC in the event of closure of Skelmersdale HWRC.

Summary and evaluation

Combined the two West Lancashire facilities already receive in the region of 13,000 tonnes of waste and this does not allow for waste displaced from Rufford HWRC. This could result in the two facilities receiving as much as 17,000 tonnes in the future. It is anticipated the two facilities will manage this quantity of waste but it is clear, in terms of size alone, that neither site could do so independently. On this basis the distribution of households in the District is irrelevant.

Recommendation:

It is recommended that neither Burscough nor Skelmersdale HWRC are closed as part of this review.

Ribble Valley

Ribble Valley has a population of approximately 57,700 and there are 24,855 residential properties within the District. The two HWRC's are located in Longridge and Clitheroe and receive a combined tonnage of 7,604 tonnes. It is anticipated that the tonnages received by the two facilities will increase following the closure of Langho HWRC in April 2011 which itself previously received 3,700 tonnes per year.

	Tonnage received	Area of facility (m ²)	In the event of closure no. of households within 'x' miles of a HWRC			
			4 Miles	6 Miles	8 miles	10 miles
Longridge	4,078	921	17,471 70.29%	20,042 80.64%	23,724 95.45%	24,854 100%
Clitheroe	3,526	1,410	12,703 51.11%	19,794 79.64%	24,472 98.46%	24,728 99.49%

Longridge HWRC

Longridge HWRC receives in the region of 4,078 tonnes of waste per year. However, it is anticipated that this will increase following the closure of Langho HWRC. There is also potential for increased visitors following the recommendation to close Garstang HWRC earlier in this report although it is anticipated that the majority of households that currently use Garstang would visit Preston HWRC.

The HWRC is located on the B6243 Chapel Hill the access to which is shared with industrial premises. At 921m² the facility is the smallest in Lancashire and whilst this does not affect the safe operation of the facility it's size does restrict the range and levels of service that can be provided. The size of the site also means that it can become congested at busy times. Previous plans to expand the facility onto adjacent land (which is former landfill) have proved prohibitive due to the cost of remediation of the land. The HWRC is single level and for safety reasons the facility must close the gates to customers while containers are serviced which does impact on access to the neighbouring businesses.

The site is held by Lancashire County Council under a lease from the landowner for a 30 year term which commenced in August 2001. As part of this lease there is the potential for a rent review every five years. Lancashire County Council was due a rent review in 2006, when it was expected that the rent would double. The current rent is £6,000 per annum. This has never been carried out, but Lancashire County Council would be liable for back rent should the landowner choose to do so. The landowner has made several enquires about Lancashire County Council leaving the site and have previously had plans to convert the site to factory units. The site only has planning permission until 2021.

25% of households in Ribble Valley are currently closest to Longridge although it is recognised that due it's location on the outskirts of Ribble Valley the facility is also used by households from outside of the District - in particular the Grimsargh area of Preston to the West.

The closest HWRC to Longridge is Preston HWRC a distance of 8.6 miles and households from the centre of Longridge and to the West would most likely use this facility. However, Clitheroe HWRC, which is 10.8 miles from Longridge would likely be utilised by household to the East that currently use Longridge. In the event of it's closure 81% of the residents of Ribble Valley would still be within 6 miles of a HWRC.

Clitheroe HWRC

Clitheroe HWRC receives in the region of 3,526 tonnes of waste per year. However, like Longridge it is anticipated that this will increase following the closure of Langho HWRC.

Access to the HWRC is approximately one mile from the B6243 on Henthorn Road. Henthorn Road is a single track road, and can cause difficulties for passing traffic. There is a short feed road from Henthorn Road to the site and access is shared with a restored landfill site, traffic to which is negligible. The HWRC is single level and for safety reasons the facility must close the gates to customers while containers are serviced, although this does not affect neighbouring traffic.

Whilst bigger than Longridge HWRC at 1,410m² the site is still quite small and whilst this does not affect the safe operation of the facility it's size does restrict the range and levels of service that can be provided. The size of the site also means that it can become congested at busy times. Due to the nature of the surrounding land (former landfill) there is very little scope for expansion.

50% of households in Ribble Valley are currently closest to Clitheroe HWRC. In the event of its closure 80% of the residents of Ribble Valley would still be within 6 miles of a HWRC. However, the household and distance to nearest facility statistics are complicated by the recommendation to close Great Harwood HWRC later in this report.

Summary and evaluation

Ribble Valley is a large (geographically) rural district which shares borders with several other districts. 25% of households are currently located closer to HWRC's outside of the district.

The Langho HWRC which was located 9 miles from Longridge and 6.4 miles from Clitheroe HWRC's closed in April 2011 but itself was closer to Great Harwood HWRC (5.1 miles). Langho previously received in the region of 3,700 tonnes a year. It is impossible to assess at this stage which HWRC facilities householders that would have used Langho will now visit but inevitably both Longridge and Clitheroe will be impacted in this respect. This will be further exacerbated by the recommendation to close Great Harwood and Garstang HWRC's as part of this report.

Whilst it is considered that both Longridge and Clitheroe will manage the additional visits to each facility generated by the closure of Langho (and potentially Great Harwood/Garstang) it is clear that from their size, and the tonnage received, each of these facilities will be at capacity. As such neither facility could accommodate the additional significant impact of the other one closing.

It would be fair to say that neither facility is ideal in terms of size and both restrict the potential improvement of services that could be, and are, provided by Lancashire County Council at bigger HWRC's. Both HWRC's can be congested at busy times which also detracts from the service provided and can result in a reduction in recycling achieved. In addition, there is significant potential for increased costs to Lancashire County Council in the future under the terms of the lease at Longridge.

The cost of operating two HWRC's is such that replacement of two facilities with one means that the operating savings achieved can largely fund the capital outlay required for the construction of a new facility. As such, the provision of one larger facility which better serves the location of households and number of visitors generated in Ribble Valley would be the optimum position in the district and should be considered separately to this review. However, any new facility would need to be located fairly centrally between Clitheroe and Longridge and obtaining land and necessary consents for such a facility in this largely greenbelt area may ultimately prove prohibitive.

Recommendation:

It is recommended that neither Longridge nor Clitheroe HWRC are closed as part of this review.

However, should it be practicable, future consideration should be given - separately to this review - to the further refining and improvement of the HWRC network by replacement of both facilities with a new HWRC which is more centrally located and better sized to accommodate the tonnages and visits generated within the District.

Hyndburn

Hyndburn has a population of approximately 81,100 and there are 39,666 residential properties within the District. The two HWRC's are located in Altham and Great Harwood and receive a combined tonnage of 9,484 tonnes.

	Tonnage received	Area of facility (m ²)	In the event of closure no. of households within 'x' miles of a HWRC			
			4 Miles	6 Miles	8 miles	10 miles
Altham	6,134	2,642	39,443 99.44%	39,666 100%	39,666 100%	39,666 100%
Great Harwood	3,350	1,832	39,458 99.48%	39,666 100%	39,666 100%	39,666 100%

Altham HWRC

Altham HWRC receives in the region of 6,134 tonnes of waste per year. The facility is located within the boundaries of an operational landfill site off Whinney Hill Road and the feed road into the HWRC is shared with the landfill site. The site is held under

lease from Accrington Brick and Tile Company for a 65 year term which commenced in March 1981.

Altham is a split level facility which facilitates convenient use for the public for most containers (no need to climb steps) and has a separate area for vehicles to service the majority of the containers. Whilst the size of the site is sufficient the vehicle manoeuvring area takes up a significant amount of the overall area. The majority of containers can be serviced without the need to close the facility to the public but there are containers on the upper level that require this to happen. In these circumstances and at busy times this can cause congestion and impact on the landfill site access. However, the busiest times for the HWRC are weekends when the landfill site traffic is reduced.

65% of households in Hyndburn are currently closest to Altham HWRC. Due to its close proximity to Great Harwood HWRC (2.5 miles) in the event of its closure all of the households in Hyndburn would still be within 6 miles of a HWRC.

Great Harwood HWRC

Great Harwood HWRC receives in the region of 3,350 tonnes of waste per year which is the third smallest tonnage of all of Lancashire's HWRC's.

The site is located off Alan Ramsbottom Way, within Heys Lane Industrial Estate and is held under lease from Hyndburn Borough Council for a 125 year term which commenced in July 1991. Access to the road is immediately off the highway and there is no lead in road. The HWRC is single level and for safety reasons the facility must close the gates to customers whilst containers are serviced. This in turn means that vehicles must queue on the highway when the facility is closed.

32% of households in Hyndburn live closest to Great Harwood but due to its close proximity to Altham HWRC all households in the district would still be within 6 miles of a HWRC in the event of its closure.

Summary and evaluation

Due to the small amount of waste received and its close proximity to Altham HWRC there is little justification for not closing Great Harwood HWRC under the terms of this review.

Altham HWRC is a split level facility offering greater convenience and better container servicing. Whilst its access is shared with the landfill site the need to close the facility for servicing is much less frequent and queuing traffic is kept off the public highway.

Recommendation: That Great Harwood HWRC is closed.

Rossendale

Rossendale has a population of approximately 67,100 and there are 31,566 residential properties within the District. The two HWRC's are located in Haslingden and Bacup and receive a combined tonnage of 7,852 tonnes - the lowest of any of the Districts under review.

	Tonnage received	Area of facility (m ²)	In the event of closure no. of households within 'x' miles of a HWRC			
			4 Miles	6 Miles	8 miles	10 miles
Haslingden	4,729	1,823	28,439 90.09%	31,566 100%	31,566 100%	31,566 100%
Bacup	3,123	1,516	21,395 67.78%	28,084 88.97%	31,566 100%	31,566 100%

Haslingden HWRC

Haslingden HWRC receives approximately 4,729 tonnes of waste per year.

The site was originally held under a user rights agreement by Lancashire County Council from Rossendale Borough Council however the current lease has expired. Neither Rossendale Borough Council nor Lancashire County Council have any records of terms or conditions of any extension to the lease. This site is currently operated on a holding over lease however this theoretically means that the lease can be terminated upon provision of sufficient notice.

The HWRC access is off the A680 Blackburn Road via a very steep and narrow road (Clough End Road) which has a growing number of residential properties on it. The site has a long internal feed road off Clough End Road, and the centre has a common entrance with the adjacent (closed) landfill site.

The site is reasonably sized in terms of area and is single level. However, the lead in road to the facility is such that when the site is closed for servicing traffic waiting to access the HWRC does not impact on any other property or the highway.

49% of households in Rossendale currently live closest to Haslingden. In the event of its closure however all households in the district will remain within 6 miles of a HWRC. A small number of households (4%) in this event would be closest to Altham HWRC although it is likely that many more would use this facility in preference to Bacup as it is more easily accessible in terms of the highway network. This would further impact on the Altham facility following the recommendation in this report to close Great Harwood HWRC.

Bacup HWRC

Bacup HWRC receives just 3,123 tonnes of waste per year, the second lowest tonnage of all of Lancashire's HWRC's. The site is owned by Lancashire County Council.

Access to the HWRC is from the A681 on Blackwood Road, and the facility has a shared entrance with the adjacent (closed) landfill site. There is a short feed road from Blackwood Road to the site. Blackwood Road is a very steep and narrow road which has a number of residential properties on it. It can also become impassable in poor weather conditions.

There is a short lead road to the HWRC which is single level and therefore for safety reasons must close the gates to customers whilst containers are serviced. Traffic can queue back onto Blackwood Road in this circumstance but due to the relatively low number of visitors received at the site this is infrequent and does not impact significantly on the highway.

51% of households in the district live closest to Bacup. The nearest alternative HWRC in the event of closure of Bacup HWRC is Haslingden although it is anticipated that, whilst it is further away, residents to the east of the district may use the new Burnley HWRC at Heasandford as accessibility to the facility and service levels available at it will be much easier and better than Haslingden. Closure of Bacup HWRC would leave 88.97% of households in the District within 6 miles of a HWRC.

Summary and evaluation

Due to the low waste tonnage generated at HWRC's in the District and the proximity of alternative facilities there is little justification to maintain two HWRC's in Rossendale. However, the selection of a HWRC for closure is not totally straightforward in the case of this District.

Both facilities are similar in size and population is split between them almost 50/50. Neither has the benefit of particularly good access although it must be noted that Haslingden does already receive more tonnage and accordingly more visitors than Bacup and as such more site users would be displaced in the event of it's closure. However, closure of Haslingden would ensure that 100% of householders would remain within 6 miles of a HWRC but closure of Bacup would mean that 11.03% (3482 households) are not.

Significantly though, although the extent cannot be determined at this stage, closure of Haslingden would inevitably impact on Altham HWRC - visitors to which will increase in the event of closure of Great Harwood. As such any decision to close Haslingden would have a negative affect elsewhere in the authority's HWRC network which would not be the case for Bacup.

On this basis this report will recommend the closure of Bacup HWRC. However, it is important to note that in doing so it will be necessary to have established permanent leasing arrangements for the property with Rossendale Borough Council. Should such agreement not be obtainable then it would be recommended that Haslingden HWRC close instead.

Recommendation:

Subject to the resolution of property issues for Haslingden - that Bacup HWRC is closed.

Pendle

Pendle has a population of approximately 89,300 and there are 37,763 residential properties within the District. The two HWRC's are located in Colne and Barnoldswick and receive a combined tonnage of 9,764 tonnes.

	Tonnage received	Area of facility (m ²)	In the event of closure no. of households within 'x' miles of a HWRC			
			4 Miles	6 Miles	8 miles	10 miles
Colne	6,804	1,094	32,697 86.58%	37,759 99.99%	37,763 100%	37,763 100%
Barnoldswick	2,960	1,388	31,253 82.76%	37,751 99.97%	37,763 100%	37,763 100%

Colne HWRC

Colne HWRC receives approximately 6,804 tonnes of waste per year and as such is one of the busier facilities that is being considered for closure.

In property terms Colne is different to all of the other HWRC's in the respect that the site is wholly owned by Lancashire County Council's contractor, Sita, and is provided under the terms of the Council's HWRC contract. This results in significantly increased operating costs under the contract in comparison to other HWRC's. The current HWRC contract ends in March 2013 and there is no guarantee to the authority of it's availability for use as a HWRC after this date.

The facility has shared access off Corporation Street, Colne with Sita's commercial waste transfer station. Traffic to the HWRC must queue with commercial traffic arriving at the transfer station which is weighed on a weighbridge before proceeding. This can cause delays in accessing the HWRC for the public. The HWRC is single level and for safety reasons the facility must close the gates to customers whilst containers are serviced. Due to the relatively high number of visitors to the facility this can impact on traffic using the waste transfer station - which includes Pendle Borough Council refuse collection vehicles.

Due to it's location within the waste transfer station the HWRC is extremely small for the amount of waste and visits it receives. Whilst the facility can operate safely with current volumes of traffic it is not considered that increasing these would be an option as this would impact severely on congestion and could result in unsafe operating conditions. Its size also affects the range and levels of service that can be provided at the facility.

Currently 64% of households in the District are closest to Colne HWRC. However, the Colne facility is just 4.4 miles from the new Burnley HWRC at Heasandford. 17% of households in the district are already closest to the Burnley HWRC and this would rise to 73% in the event of the closure of Colne. Also, in this event, virtually all households in Colne would still be within 6 miles of a HWRC.

The new Burnley HWRC opened in June 2011. The facility occupies an area of 8,147m² and is a split level facility offering increased and improved facilities, easier

access to containers for the public and separate servicing areas which allows the facility to continue operating when containers are serviced. This facility will comfortably accommodate any additional visits that would be generated in the event of closure of Colne.

Barnoldswick HWRC

Barnoldswick HWRC receives 2,960 tonnes per year - the smallest tonnage of all of Lancashire's HWRC's.

The site is owned by Lancashire County Council and is located just off West Close Road. Access to the site is via a lorry park. The lorry park is owned by a third party over which Lancashire County Council have right of access. The right of access is subject to payment of half the cost of any repair and maintenance of the access area. The HWRC is single level and for safety reasons the facility must close the gates to customers whilst containers are serviced. Due to the area of the lorry park this does not impact on other properties or the highway. The site is relatively small in area but is sufficient for the amount of visits received and could accommodate more.

18% of households in the District are currently closest to Barnoldswick. The nearest alternative facility is Colne HWRC which is 7 miles away. In the event of it's closure 99.97% of households would still be within 6 miles of a HWRC.

Summary and evaluation

Both the size of the Colne facility and its accessibility are such that increasing visitors to the facility by the closure of Barnoldswick would not be a realistic option. However, of more concern is the fact that should Barnoldswick be closed then, as Lancashire County Council does not own the Colne facility, there is no guarantee that a HWRC service could be provided in Pendle. Indeed, any increase in congestion resulting from additional visitors would affect Sita's commercial operations and could subsequently result in their withdrawal of the site.

The Barnoldswick HWRC is under utilised and does not justify it's operating costs in respect of the amount of waste it receives. However, the closure of Colne would increase the number of households closest to Barnoldswick and in turn it is anticipated that the numbers of visitors to the facility would increase. More importantly though, using the principal of providing at least one HWRC per district it is the only facility that Lancashire County Council owns and can subsequently guarantee the provision of in Pendle.

Whilst more householders will be affected by the closure of Colne when compared to Barnoldswick the improved facilities and service that can be provided at the Burnley HWRC will compensate any householders whose journeys increase by closing Colne. Virtually all households will also still be within 6 miles of a HWRC. The increased costs of providing the Colne facility and lack of certainty over its continued availability are such that it is recommended that Colne is considered for closure in this instance.

Recommendation: That Colne HWRC is closed.

Consultation

This report recommends HWRC's for closure based upon the main assessment criteria of tonnage, property, and population/households and it is important to stress that these are recommendations and no decision has been made at the time of production of this report.

It is intended to consult locally with all of the District, Town and Parish Council's in Lancashire before finalising any recommendations to the Deputy Leader of the Council. It is anticipated that the process of closing the recommended HWRC's will follow as soon as practicable thereafter.

Comments about the Review will take place from 5th July 2011 to 5pm on 30th September 2011 during which time written comments received by members of the public will also be considered.

Your comments should preferably be sent via the website at www.lancashire.gov.uk/waste where you can click through to the Review Response form.

Alternatively you can email:

hwrcreview@lancashire.gov.uk

or write to:

Jo Turton - Executive Director Environment Directorate
Lancashire County Council
Waste Management Group
PO Box 78
County Hall
Fishergate
Preston
Lancashire
PR1 8XJ

In advance of consultation it is important to highlight that Lancashire County Council is aware that the decision to close any HWRC will impact on the immediate community that the facility serves and that it will result in some cases in additional journeys for some householders. The aim of this report is to consider statistical information and determine which facilities should be recommended for closure on the basis that their closure will least impact both the District, and the HWRC service provided by Lancashire County Council, as a whole.

Lancashire County Council's aim in closing HWRC's is to provide a more cost effective network of HWRC's which best manages the quantity of waste delivered to them whilst providing visitors with high levels of customer service and factors affecting this will be given due consideration during the review process.

Appendices

Appendix 1 - HWRC Tonnages in Lancashire

HWRC	3 yr Average - Total Waste Arising - Accepted
Barnoldswick	2,960.20
Bacup	3,123.99
Gt. Harwood	3,350.62
Garstang	3,448.34
Clitheroe	3,526.82
Longridge	4,078.54
Haslingden	4,729.82
Lytham	5,200.74
Burscough	5,451.48
Carnforth	6,134.03
Altham	6,134.68
Colne	6,804.39
Skelmersdale	7,633.18
Burnley	8,073.16
Fleetwood	8,669.42
Chorley	11,930.25
Preston	12,848.67
Lancaster	15,353.28
Farington	15,722.66

Appendix 2 – Comparisons Table

Lancaster
Wyre
Hyndburn
Rossendale
Pendle
West Lancashire
Ribble Valley

Population 2009 ⁺	Average Tonnage received by District	2008/09 Tonnage Received	2009/10 Tonnage Received by HWRC	2010/11 Tonnage Received by HWRC	3 year average Tonnage Received By HWRC	Customer visits [#] based on 50Kg per journey	Area of Facility
Rib. Valley 57,700	Rossendale 7,852	Barnoldswick 3,098	Barnoldswick 2,963	Barnoldswick 2,818	Barnoldswick 2,960	Barnoldswick 59,200	Longridge 921m ²
Rossendale 67,100	Hyndburn 9,484	Bacup 3,235	Bacup 3,245	Bacup 2,890	Bacup 3,123	Bacup 62,460	Colne 1,094m ²
Hyndburn 81,100	Pendle 9,764	Gt. Harwood 3,391	Gt. Harwood 3,335	Clitheroe 3,117	Gt Harwood 3,350	Gt. Harwood 67,000	Barnoldswick 1,388m ²
Pendle 89,300	Rib. Valley 11,339*	Garstang 3,494	Clitheroe 3,395	Gt Harwood 3,325	Garstang 3,448	Garstang 68,960	Clitheroe 1,410m ²
West Lancs 110,200	Wyre 12,117	Clitheroe 4,067	Garstang 3,435	Garstang 3,414	Clitheroe 3,526	Clitheroe 70,520	Bacup 1,516m ²
Wyre 111,100	West Lancs 17,400*	Longridge 4,079	Longridge 4,149	Longridge 4,006	Longridge 4,078	Longridge 81,560	Haslingden 1,823m ²
Lancaster 139,800	Lancaster 21,487	Haslingden 4,625	Haslingden 4,809	Haslingden 4,754	Haslingden 4,729	Haslingden 94,580	Gt. Harwood 1,832m ²
		Burscough 5,524	Burscough 5,366	Burscough 5,463	Burscough 5,451	Burscough 109,020	Garstang 1,896m ²
		Altham 6,267	Carnforth 5,903	Altham 5,904	Carnforth 6,134	Carnforth 122,680	Skelmersdale 2,015m ²
		Carnforth 6,444	Altham 6,231	Carnforth 6,054	Altham 6,134	Altham 122,680	Altham 2,642m ²
		Colne 7,344	Colne 6,425	Colne 6,643	Colne 6,804	Colne 136,080	Fleetwood 2,709m ²
		Skelmersdale 7,923	Skelmersdale 7,605	Skelmersdale 7,370	Skelmersdale 7,633	Skelmersdale 152,660	Burscough 2,843m ²
		Fleetwood 8,654	Fleetwood 8,723	Fleetwood 8,630	Fleetwood 8,669	Fleetwood 173,380	Lancaster 3,720m ²
		Lancaster 15,926	Lancaster 15,338	Lancaster 14,794	Lancaster 15,353	Lancaster 307,060	Carnforth 4,203m ²
					*Rufford 4,316		
⁺ Source: The Office for National Statistics	*include Rufford and Langho tonnages				*Langho 3,735	[#] Using 3 year average tonnage	

Appendix 3 - Lancashire's HWRC Network and Routes Map

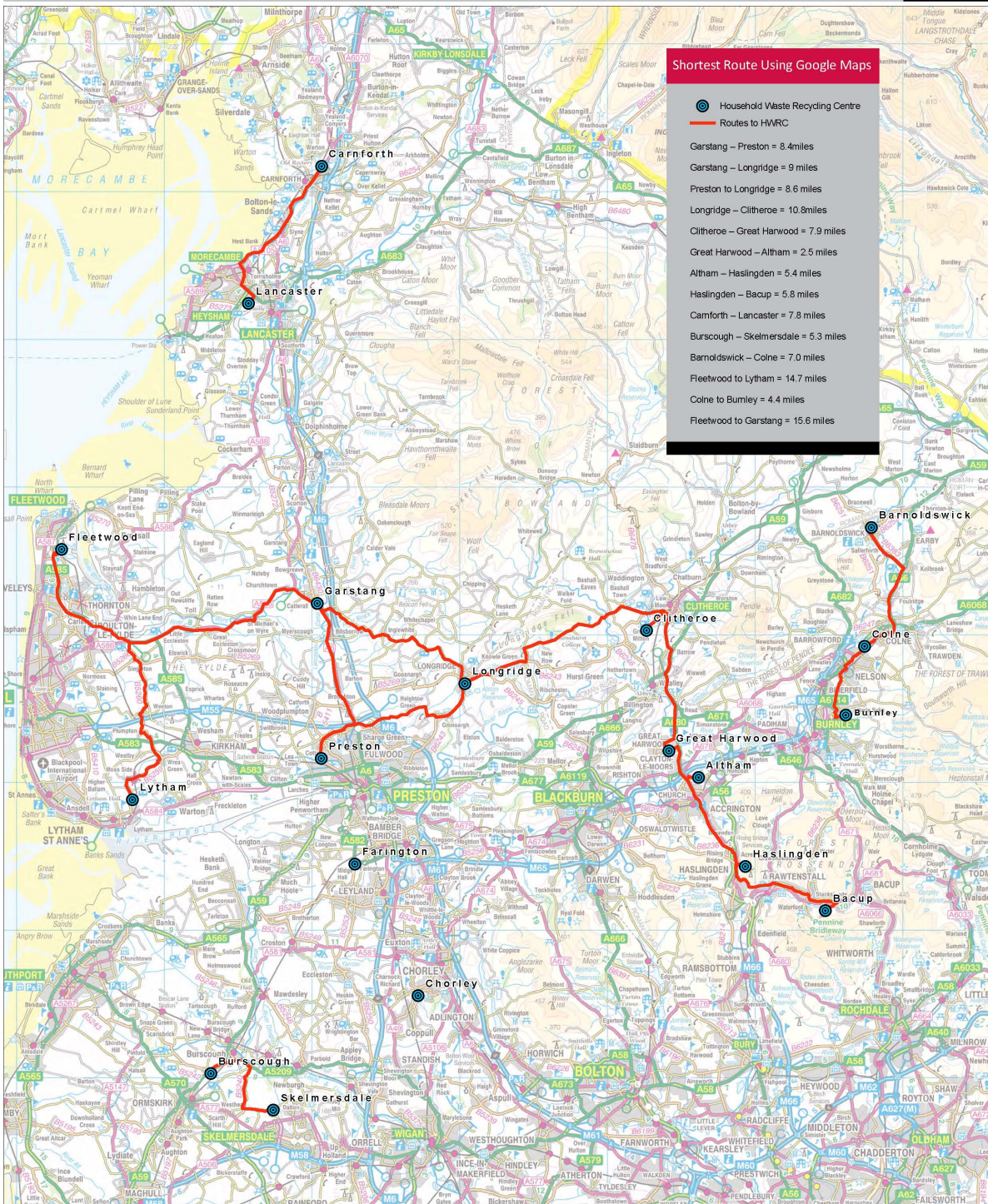
Shortest Route Using Google Maps



Map created : 23/05/2011

0 5 10 15 20 Kilometres

Map scale : 1:160,000



- Shortest Route Using Google Maps**
- Household Waste Recycling Centre
 - Routes to HWRC
 - Garstang – Preston = 8.4 miles
 - Garstang – Longridge = 9 miles
 - Preston to Longridge = 8.6 miles
 - Longridge – Clitheroe = 10.8miles
 - Clitheroe – Great Harwood = 7.9 miles
 - Great Harwood – Altham = 2.5 miles
 - Altham – Haslingden = 5.4 miles
 - Haslingden – Bacup = 5.8 miles
 - Camforth – Lancaster = 7.8 miles
 - Burscough – Skelmersdale = 5.3 miles
 - Barnoldswick – Colne = 7.0 miles
 - Fleetwood to Lytham = 14.7 miles
 - Colne to Burnley = 4.4 miles
 - Fleetwood to Garstang = 15.6 miles

This Map is reproduced from Ordnance Survey material with the permission of Ordnance Survey on behalf of the controller of Her Majesty's Stationery Office (C) Crown Copyright. Unauthorised reproduction infringes Crown Copyright and may lead to Prosecution or civil proceedings. Lancashire County Council Licence No.10002320. Map produced by Information Governance and Directorate Support.

Appendix 4 – Population Maps

Alternative To Lancaster HWRC

Map created : 22/02/2011



Map scale : 1:250,000



The table below shows the number & percentage of properties in Lancaster nearest to a HWRC (listed as current). It also shows the number & percentage of properties nearest to a HWRC if Lancaster HWRC were to close (listed as alternative):

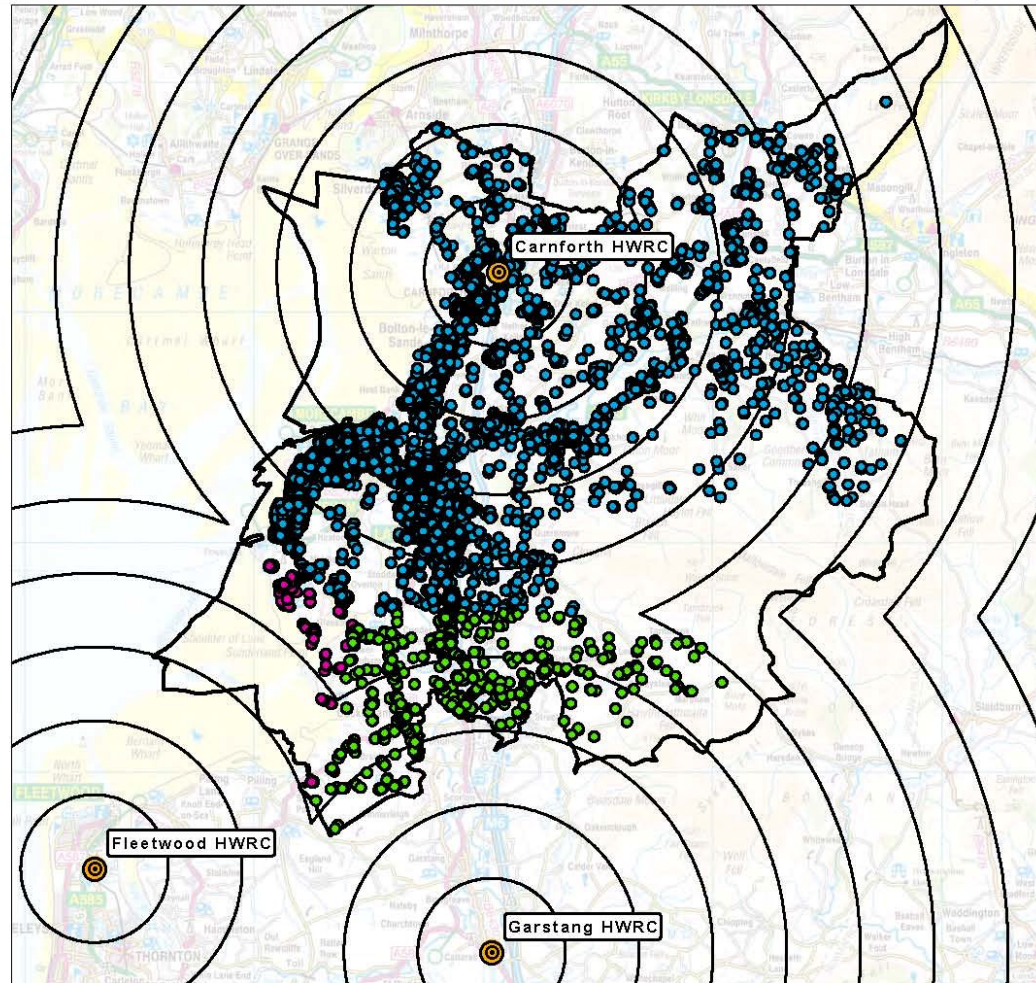
Note: 66358 residential properties in Lancaster District

HWRC	Properties	Current %	Alternative	Alternative %
Carnforth	10392	16	63601	96
Fleetwood	3	0	393	1
Garstang	184	0	2364	3
Lancaster	55779	84	0	0

The table below shows the number of properties closest to HWRC at 2 mile intervals (listed as current). It also shows the number of properties closest to a HWRC if Lancaster HWRC closed (listed as alternative):

HWRC	2 Miles	4 Miles	6 Miles	8 Miles	10 Miles	12 Miles
Carnforth current	4453	3036	1849	727	249	78
Carnforth alternative	4453	3901	15202	32929	7038	78
Fleetwood current	0	0	0	3	0	0
Fleetwood alternative	0	0	0	13	380	0
Garstang current	0	0	56	117	11	0
Garstang alternative	0	0	56	576	1731	1
Lancaster current	33753	19794	1769	425	38	0
Lancaster alternative	0	0	0	0	0	0

- Map Key:**
- Carnforth HWRC
 - Fleetwood HWRC
 - Garstang HWRC
 - Household waste recycling centres
 - 2 mile distance rings to HWRC
 - Lancaster District Boundary



This Map is reproduced from Ordnance Survey material with the permission of Ordnance Survey on behalf of the controller of Her Majesty's Stationery Office (C) Crown Copyright. Unauthorised reproduction infringes Crown Copyright and may lead to Prosecution or civil proceedings. Lancashire County Council Licence No. 100023320. Map produced by Information Governance and Directorate Support.

Alternative To Carnforth HWRC

Map created : 22/02/2011



Map scale : 1:250,000



The table below shows the number & percentage of properties in Lancaster nearest to a HWRC (listed as current). It also shows the number & percentage of properties nearest to a HWRC if Carnforth HWRC were to close (listed as alternative):

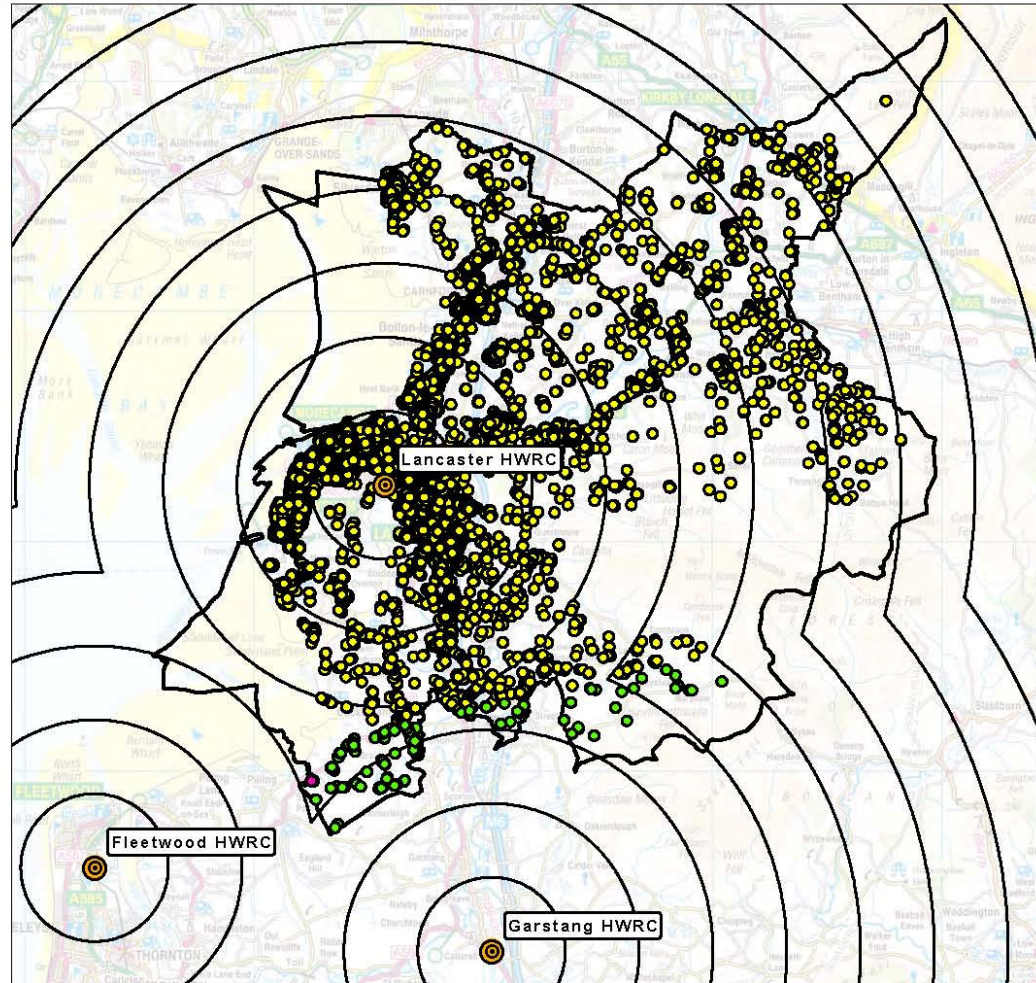
Note: 66358 residential properties in Lancaster District

HWRC	Properties	Current %	Alternative	Alternative %
Carnforth	10392	16	0	0
Fleetwood	3	0	3	0
Garstang	184	0	184	0
Lancaster	55779	84	66171	100

The table below shows the number of properties closest to HWRC at 2 mile intervals (listed as current). It also shows the number of properties closest to a HWRC if Carnforth HWRC closed (listed as alternative):

HWRC	2 Miles	4 Miles	6 Miles	8 Miles	10 Miles	12 Miles	14 Miles	16 Miles	18 Miles
Carnforth current	4453	3036	1849	727	249	78	0	0	0
Carnforth alternative	0	0	0	0	0	0	0	0	0
Fleetwood current	0	0	0	3	0	0	0	0	0
Fleetwood alternative	0	0	0	3	0	0	0	0	0
Garstang current	0	0	56	117	11	0	0	0	0
Garstang alternative	0	0	56	117	11	0	0	0	0
Lancaster current	33753	19794	1769	425	38	0	0	0	0
Lancaster alternative	33753	20616	6208	3092	1501	500	378	122	1

- Map Key:
- Fleetwood HWRC
 - Garstang HWRC
 - Lancaster HWRC
 - Household waste recycling centres
 - 2 mile distance rings to HWRC
 - Lancaster District Boundary



This Map is reproduced from Ordnance Survey material with the permission of Ordnance Survey on behalf of the controller of Her Majesty's Stationery Office (C) Crown Copyright. Unauthorised reproduction infringes Crown Copyright and may lead to Prosecution or civil proceedings. Lancashire County Council Licence No. 100023320. Map produced by Information Governance and Directorate Support.

Alternative to Fleetwood HWRC

Map created : 11/05/2011



Map scale : 1:235,000



The table below shows the number & percentage of properties in Wyre nearest to a HWRC (listed as current). It also shows the number & percentage of properties nearest to a HWRC if Fleetwood HWRC were to close (listed as alternative):

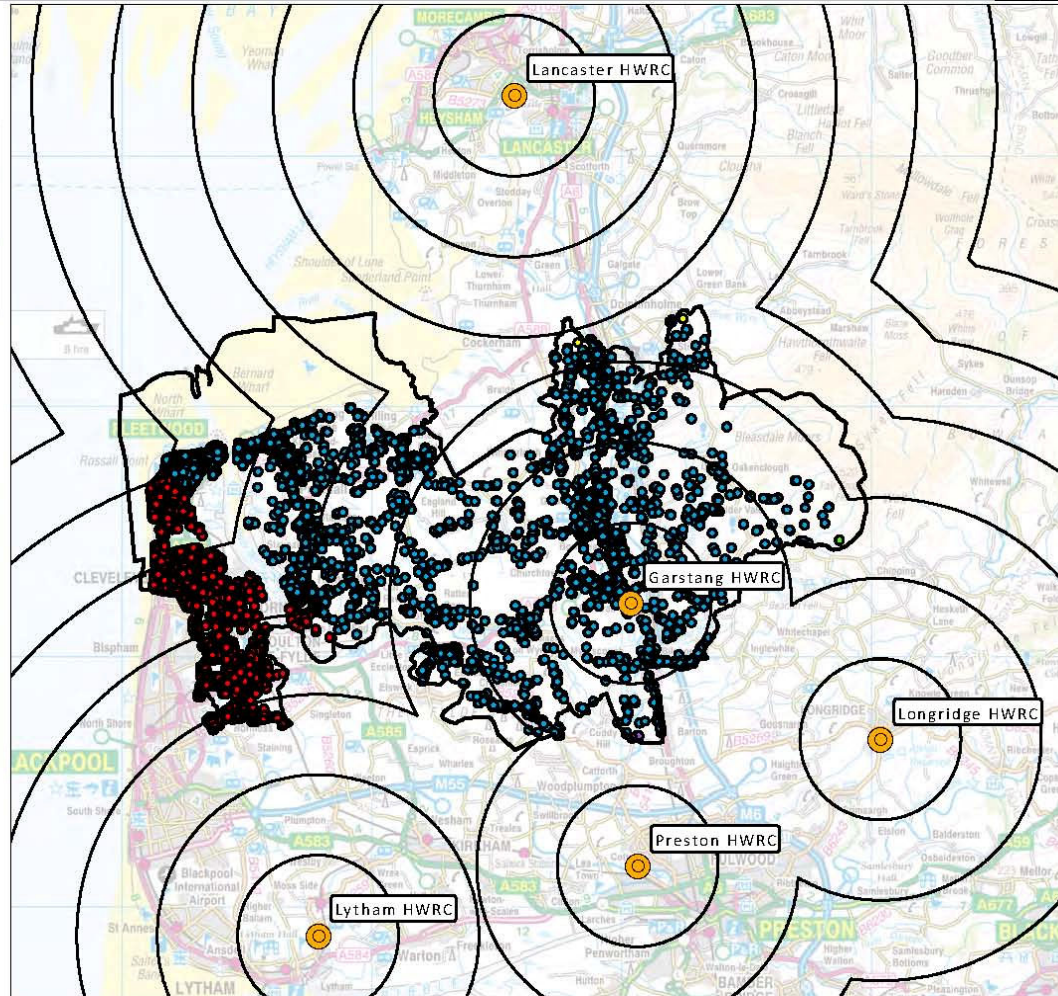
HWRC	Current Properties	Current %	Alternative	Alternative %
Fleetwood	42800	83%	0	0%
Garstang	8467	16%	22884	44%
Lancaster	31	1%	31	1%
Preston	4	0%	4	0%
Longridge	2	0%	2	0%
Lytham	4	0%	28387	55%

Note: 51308 residential properties in Wyre District

The table below shows the number of properties closest to HWRC at 2 mile intervals (listed as current). It also shows the number of properties closest to a HWRC if Fleetwood HWRC closed (listed as alternative):

HWRC	2 Miles	4 Miles	6 Miles	8 Miles	10 Miles	12 Miles	14 Miles
Fleetwood current	21926	14173	6700	1	0	0	0
Fleetwood alternative	0	0	0	0	0	0	0
Garstang current	2551	3998	1797	121	0	0	0
Garstang alternative	2551	3998	1821	1395	3595	9400	124
Lancaster current	0	0	0	31	0	0	0
Lancaster alternative	0	0	0	31	0	0	0
Preston current	0	4	0	0	0	0	0
Preston alternative	0	4	0	0	0	0	0
Longridge current	0	0	2	0	0	0	0
Longridge alternative	0	0	2	0	0	0	0
Lytham current	0	0	4	0	0	0	0
Lytham alternative	0	0	1121	7784	13871	5593	18

- Map Key:**
- Household waste recycling centres
 - Properties closest to Garstang HWRC
 - Properties closest to Lancaster HWRC
 - Properties closest to Longridge HWRC
 - Properties closest to Lytham HWRC
 - Properties closest to Preston HWRC
 - 2 mile distance rings to HWRC
 - Wyre District Boundary



This Map is reproduced from Ordnance Survey material with the permission of Ordnance Survey on behalf of the controller of Her Majesty's Stationery Office (C) Crown Copyright. Unauthorised reproduction infringes Crown Copyright and may lead to Prosecution or civil proceedings. Lancashire County Council Licence No. 100023320. Map produced by Information Governance and Directorate Support.

Alternative To Garstang HWRC

Map created : 17/05/2011



Map scale : 1:235,000



The table below shows the number & percentage of properties in Wyre nearest to a HWRC (listed as current). It also shows the number & percentage of properties nearest to a HWRC if Garstang HWRC were to close (listed as alternative):

HWRC	Current Properties	Current %	Alternative	Alternative %
Fleetwood	42800	83%	43392	85%
Garstang	8467	16%	0	0%
Lancaster	31	1%	1073	2%
Preston	4	0%	5860	11%
Longridge	2	0%	973	2%
Lytham	4	0%	10	0%

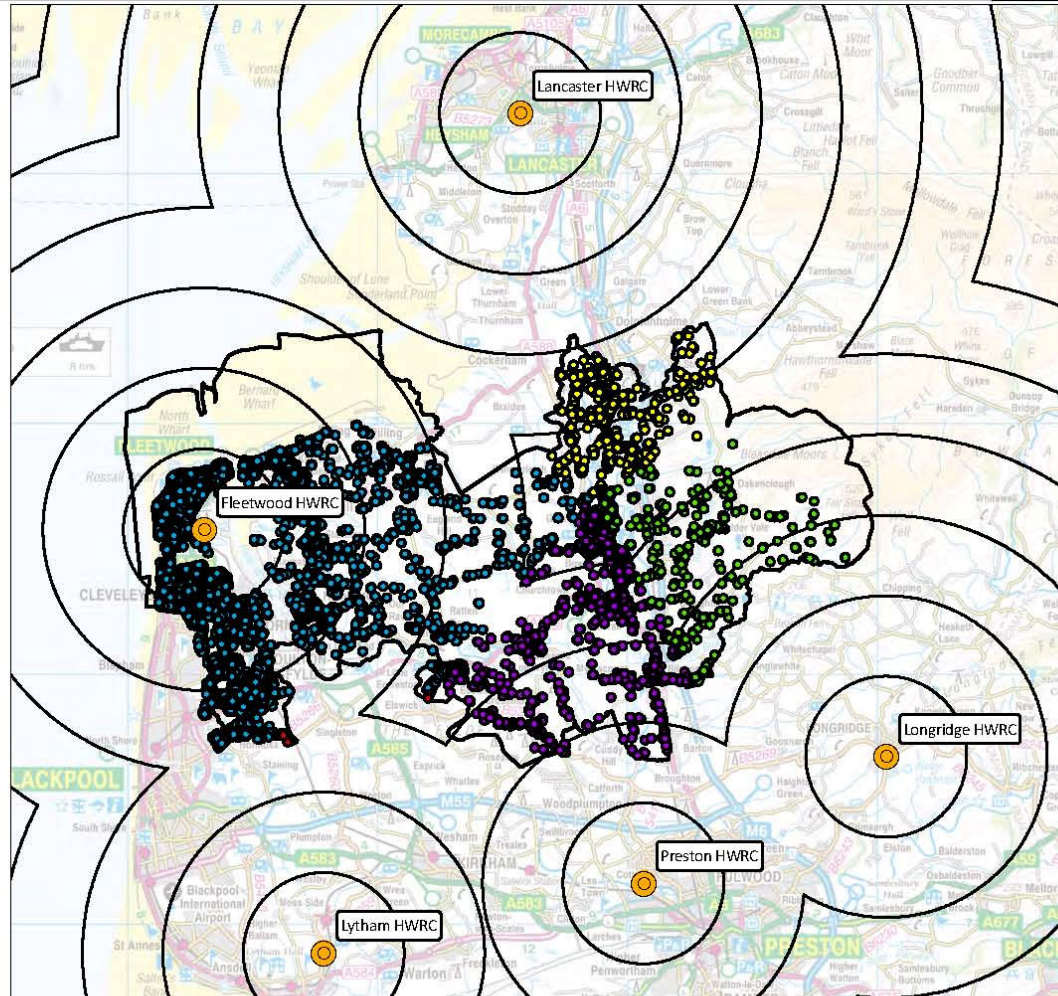
Note: 51308 residential properties in Wyre District

The table below shows the number of properties closest to HWRC at 2 mile intervals (listed as current). It also shows the number of properties closest to a HWRC if Garstang HWRC closed (listed as alternative):

HWRC	2 Miles	4 Miles	6 Miles	8 Miles	10 Miles
Fleetwood current	21926	14173	6700	1	0
Fleetwood alternative	21926	14173	6771	431	91
Garstang current	2551	3998	1797	121	0
Garstang alternative	0	0	0	0	0
Lancaster current	0	0	0	31	0
Lancaster alternative	0	0	0	595	478
Preston current	0	4	0	0	0
Preston alternative	0	75	777	2125	2883
Longridge current	0	0	2	0	0
Longridge alternative	0	0	89	276	608
Lytham current	0	0	4	0	0
Lytham alternative	0	0	4	6	0

Map Key:

- Household waste recycling centres
- Properties closest to Fleetwood HWRC
- Properties closest to Lancaster HWRC
- Properties closest to Longridge HWRC
- Properties closest to Lytham HWRC
- Properties closest to Preston HWRC
- Wyre District Boundary
- 2 mile distance rings to HWRC



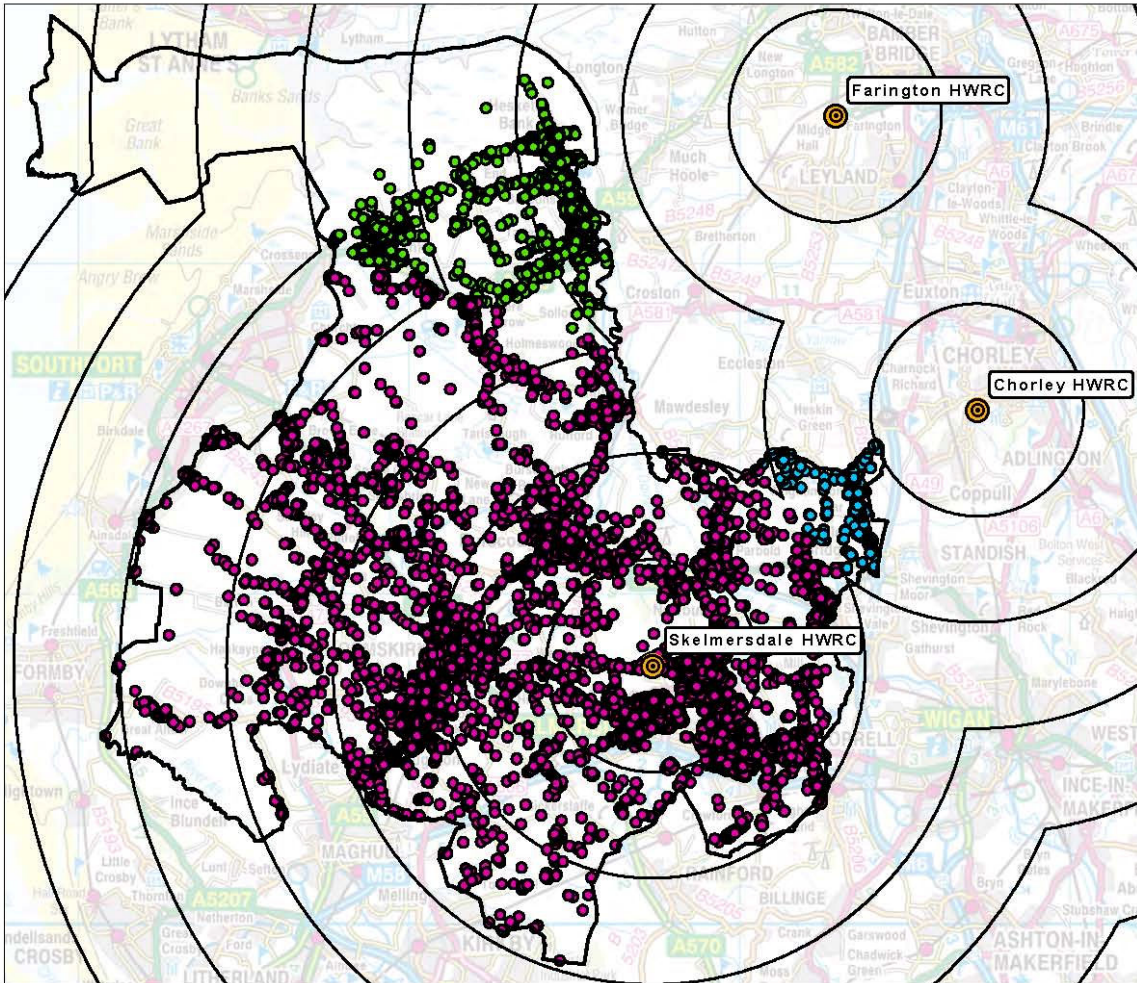
This Map is reproduced from Ordnance Survey material with the permission of Ordnance Survey on behalf of the controller of Her Majesty's Stationery Office (C) Crown Copyright. Unauthorised reproduction infringes Crown Copyright and may lead to Prosecution or civil proceedings. Lancashire County Council Licence No. 100023320. Map produced by Information Governance and Directorate Support.

Alternative To Burscough HWRC

Map created : 21/02/2011



Map scale : 1:172,689



The table below shows the number & percentage of properties in West Lancs nearest to a HWRC (listed as current). It also shows the number & percentage of properties nearest to a HWRC if Burscough HWRC were to close (listed as alternative):

HWRC	Properties	Current%	Alternative	Alternative %
Burscough	22632	45	0	0
Chorley	558	1	558	1
Farrington	3685	7	5596	11
Skelmersdale	23759	47	44480	88

Note: 50634 residential properties in West Lancs

The table below shows the number of properties closest to HWRC at 2 mile intervals (listed as current). It also shows the number of properties closest to a HWRC if Burscough HWRC closed (listed as alternative):

HWRC	2 Miles	4 Miles	6 Miles	8 Miles	10 Miles	12 Miles
Skelmersdale current	13446	10179	134	0	0	0
Skelmersdale alternative	13579	20769	7109	2034	983	6
Burscough current	11345	6657	2347	2281	2	0
Burscough alternative	0	0	0	0	0	0
Farrington current	0	0	3542	143	0	0
Farrington alternative	0	0	3572	349	1675	0
Chorley current	0	557	1	0	0	0
Chorley alternative	0	557	1	0	0	0

Map Key:

- Properties closest to Chorley HWRC
- Properties closest to Farington HWRC
- Properties closest to Skelmersdale HWRC
- Household waste recycling centres
- 2 mile distance rings to HWRC
- West Lancashire District Boundary

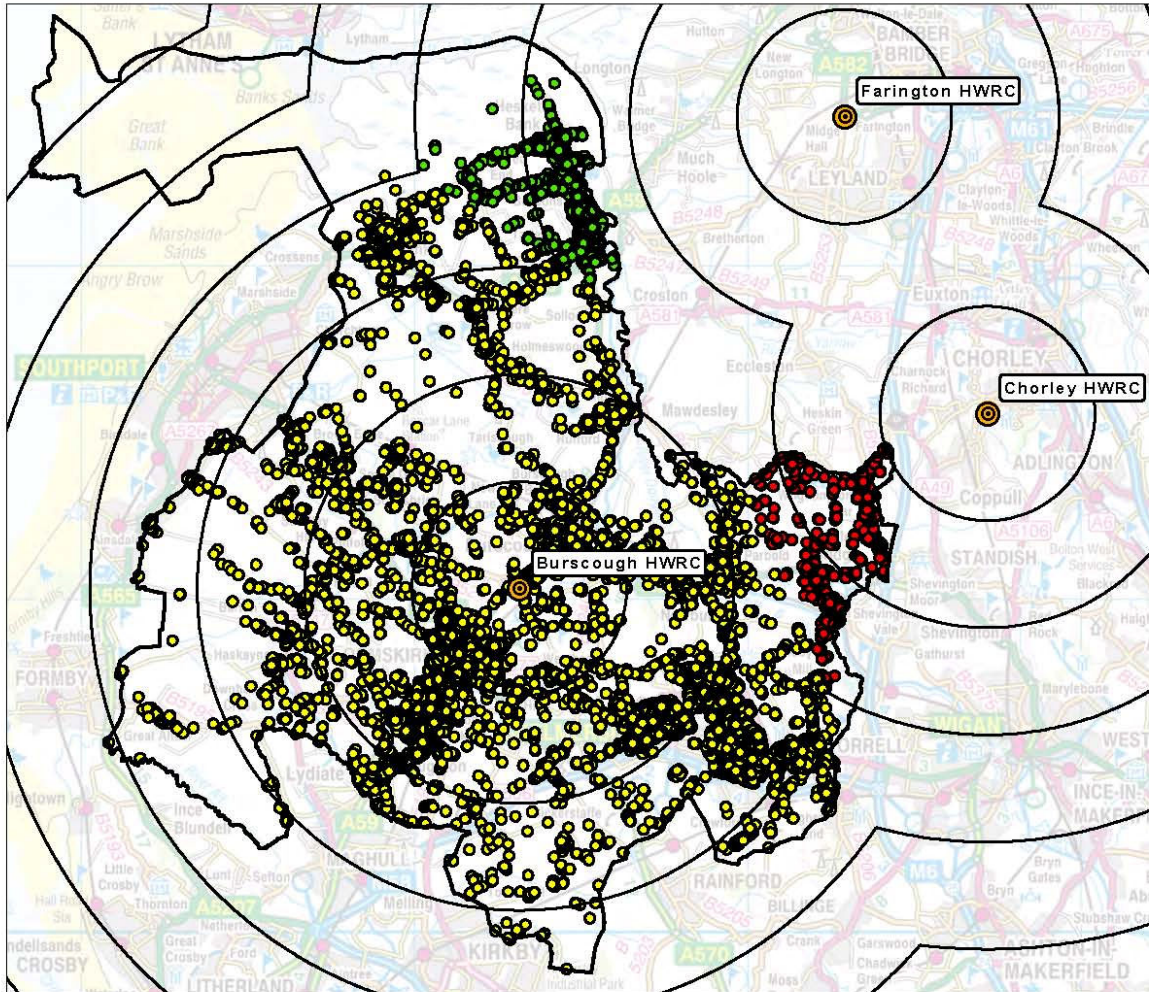
This Map is reproduced from Ordnance Survey material with the permission of Ordnance Survey on behalf of the controller of Her Majesty's Stationery Office (C) Crown Copyright. Unauthorised reproduction infringes Crown Copyright and may lead to Prosecution or civil proceedings. Lancashire County Council Licence No 100023320. Map produced by Information Governance and Directorate Support.

Alternative To Skelmersdale HWRC

Map created : 21/02/2011



Map scale : 1:172,689



The table below shows the number & percentage of properties in West Lancs nearest to a HWRC (listed as current). It also shows the number & percentage of properties nearest to a HWRC if Skelmersdale HWRC were to close (listed as alternative):

HWRC	Current	Current %	Alternative	Alternative %
Burscough	22632	45	45544	90
Chorley	558	1	1405	3
Farrington	3685	7	3685	7
Skelmersdale	23759	47	0	0

Note: 50634 residential properties in West Lancs

The table below shows the number of properties closest to HWRC at 2 mile intervals (listed as current). It also shows the number of properties closest to a HWRC if Skelmersdale HWRC closed (listed as alternative):

HWRC	2 Miles	4 Miles	6 Miles	8 Miles	10 Miles
Skelmersdale current	13446	10179	134	0	0
Skelmersdale alternative	0	0	0	0	0
Burscough current	11345	6657	2347	2281	2
Burscough alternative	11404	16065	13674	4399	2
Farrington current	0	0	3542	143	0
Farrington alternative	0	0	3542	143	0
Chorley current	0	557	1	0	0
Chorley alternative	0	561	844	0	0

Map Key:

- Properties closest to Burscough HWRC
- Properties closest to Chorley HWRC
- Properties closest to Farington HWRC
- Household waste recycling centres
- 2 mile distance rings to HWRC
- West Lancashire District Boundary

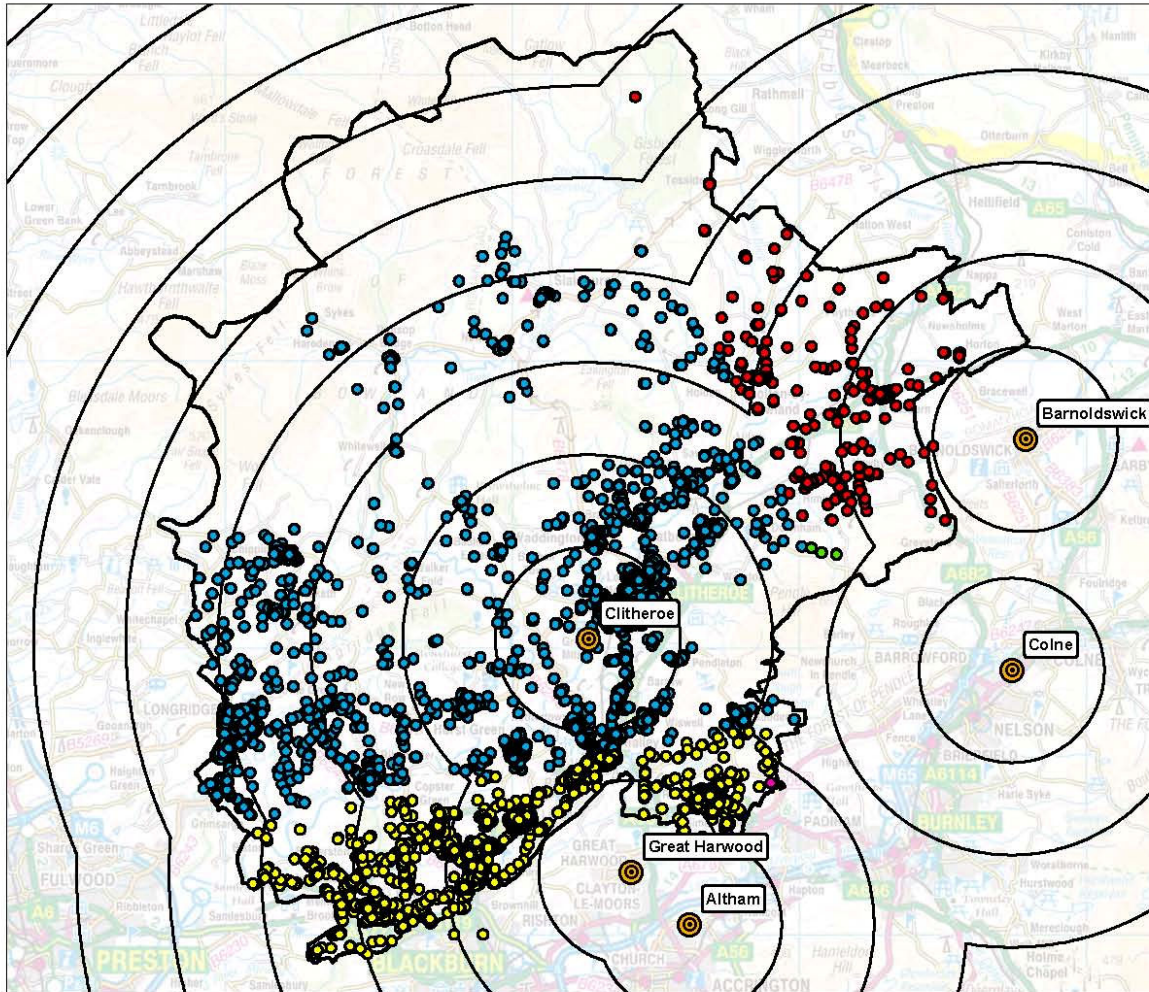
This Map is reproduced from Ordnance Survey material with the permission of Ordnance Survey on behalf of the controller of Her Majesty's Stationery Office (C) Crown Copyright. Unauthorised reproduction infringes Crown Copyright and may lead to Prosecution or civil proceedings. Lancashire County Council Licence No. 100023320. Map produced by Information Governance and Directorate Support.

Alternative To Longridge HWRC

Map created : 23/02/2011



Map scale : 1:200,000



The table below shows the number & percentage of properties in Ribble Valley nearest to a HWRC (listed as current). It also shows the number & percentage of properties nearest to a HWRC if Longridge HWRC were to close (listed as alternative):

HWRC	Properties	Current %	Alternative	Alternative %
Altham	45	0	45	0
Barnoldswick	669	3	669	3
Clitheroe	12594	50	17442	70
Colne	6	0	6	0
Great Harwood	5374	22	6693	27
Longridge	6167	25	0	0

Note: 24855 residential properties in Ribble Valley

The table below shows the number of properties closest to HWRC at 2 mile intervals (listed as current). It also shows the number of properties closest to a HWRC if Longridge HWRC closed (listed as alternative):

HWRC	2 Miles	4 Miles	6 Miles	8 Miles	10 Miles	12 Miles
Altham current	2	43	0	0	0	0
Altham alternative	2	43	0	0	0	0
Barnoldswick current	1	318	265	60	24	1
Barnoldswick alternative	1	318	265	60	24	1
Clitheroe current	7694	4374	279	221	26	0
Clitheroe alternative	7694	4374	1026	3244	1104	0
Colne current	0	0	6	0	0	0
Colne alternative	0	0	6	0	0	0
Great Harwood current	63	4976	335	0	0	0
Great Harwood alternative	63	4976	1274	378	2	0
Longridge current	3655	1095	1417	0	0	0
Longridge alternative	0	0	0	0	0	0

Map Key:

- Properties closest to Altham HWRC
- Properties closest to Barnoldswick HWRC
- Properties closest to Clitheroe HWRC
- Properties closest to Colne HWRC
- Properties closest to Great Harwood HWRC
- Household waste recycling centres
- 2 mile distance rings to HWRC
- Ribble Valley District Boundary

This Map is reproduced from Ordnance Survey material with the permission of Ordnance Survey on behalf of the controller of Her Majesty's Stationery Office (C) Crown Copyright. Unauthorised reproduction infringes Crown Copyright and may lead to Prosecution or civil proceedings. Lancashire County Council Licence No. 100023320. Map produced by Information Governance and Directorate Support.

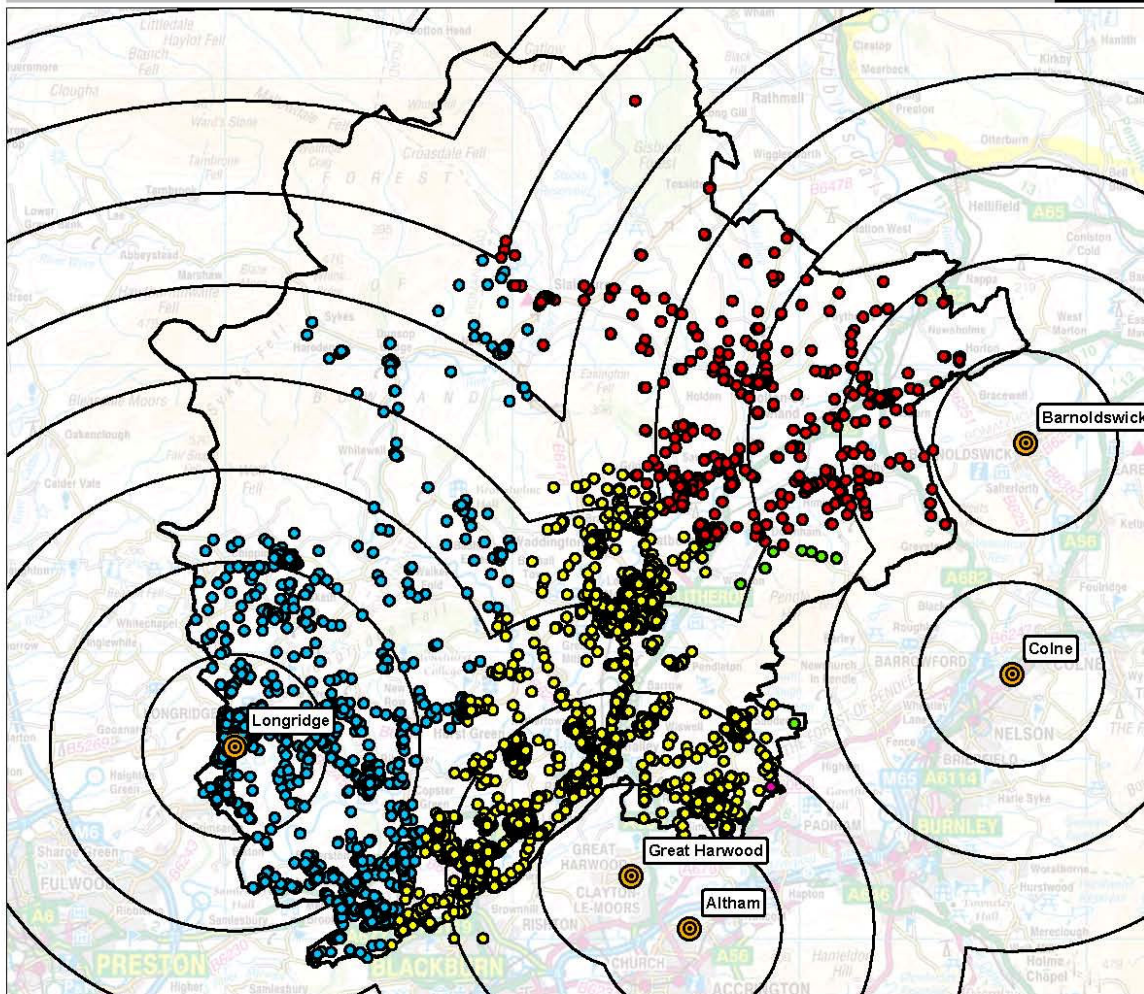
Alternative To Clitheroe HWRC



Map created : 23/02/2011



Map scale : 1:200,000



The table below shows the number & percentage of properties in Ribble Valley nearest to a HWRC (listed as current). It also shows the number & percentage of properties nearest to a HWRC if Clitheroe HWRC were to close (listed as alternative):

HWRC	Properties	Current %	Alternative	Alternative %
Altham	45	0	45	0
Barnoldswick	669	3	1702	7
Clitheroe	12594	50	0	0
Colne	6	0	19	0
Great Harwood	5374	22	16557	67
Longridge	6167	25	6532	26

Note: 24855 residential properties in Ribble Valley

The table below shows the number of properties closest to HWRC at 2 mile intervals (listed as current). It also shows the number of properties closest to a HWRC if Clitheroe HWRC closed (listed as alternative):

HWRC	2 Miles	4 Miles	6 Miles	8 Miles	10 Miles	12 Miles	14 Miles
Altham current	2	43	0	0	0	0	0
Altham alternative	2	43	0	0	0	0	0
Barnoldswick current	1	318	265	60	24	1	0
Barnoldswick alternative	1	318	285	965	62	68	3
Clitheroe current	7694	4374	279	221	26	0	0
Clitheroe alternative	0	0	0	0	0	0	0
Colne current	0	0	6	0	0	0	0
Colne alternative	0	0	10	9	0	0	0
Great Harwood current	63	4976	335	0	0	0	0
Great Harwood alternative	63	7526	5250	3593	125	0	0
Longridge current	3655	1095	1417	0	0	0	0
Longridge alternative	3655	1095	1546	111	69	56	0

Map Key:

- Household waste recycling centres
- Properties closest to Altham HWRC
- Properties closest to Barnoldswick HWRC
- Properties closest to Colne HWRC
- Properties closest to Great Harwood HWRC
- Properties closest to Longridge HWRC
- 2 mile distance rings to HWRC
- Ribble Valley District Boundary

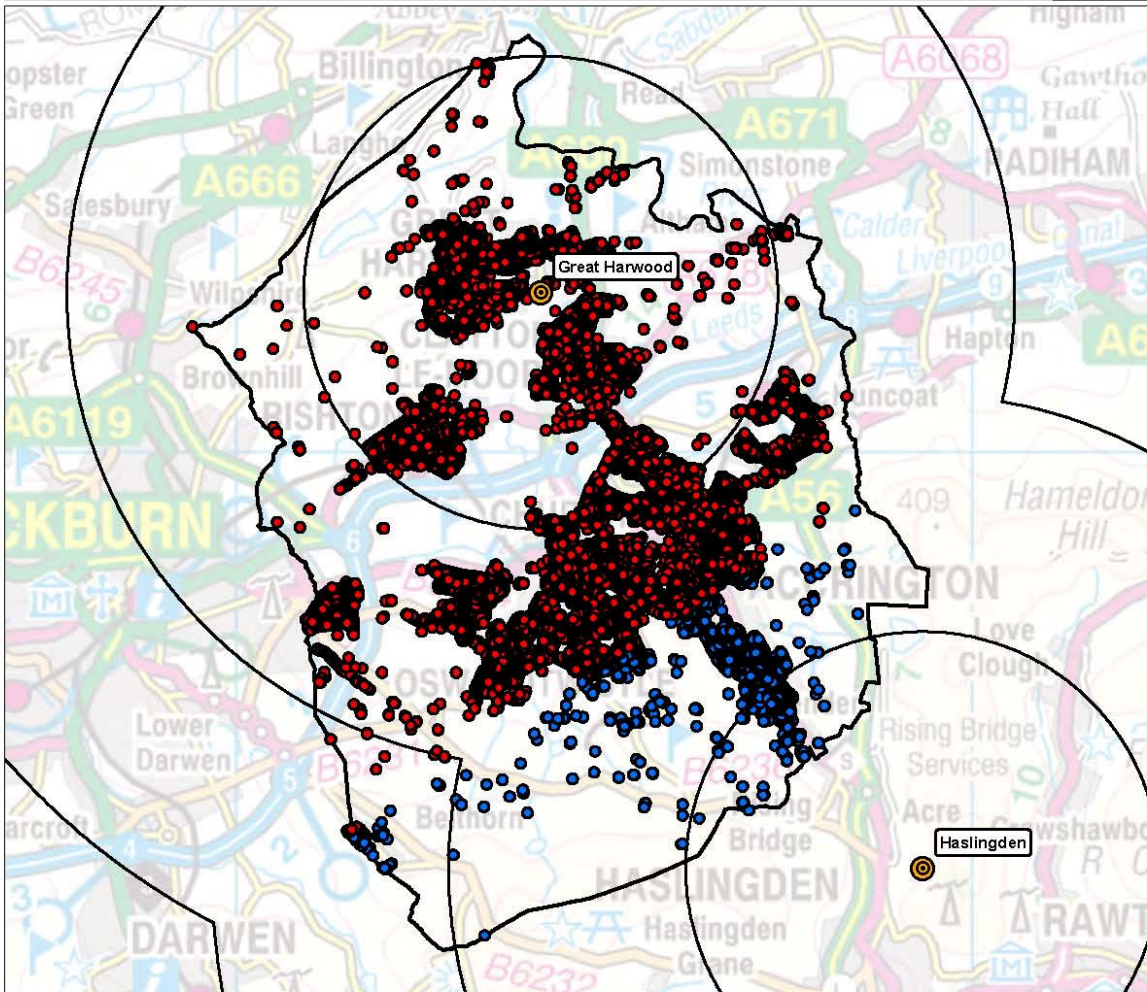
This Map is reproduced from Ordnance Survey material with the permission of Ordnance Survey on behalf of the controller of Her Majesty's Stationery Office (C) Crown Copyright. Unauthorised reproduction infringes Crown Copyright and may lead to Prosecution or civil proceedings. Lancashire County Council Licence No. 100023320. Map produced by Information Governance and Directorate Support.

Alternative To Altham HWRC

Map created : 01/03/2011



Map scale : 1:78,000



The table below shows the number & percentage of properties in Hyndburn nearest to a HWRC (listed as current). It also shows the number & percentage of properties nearest to a HWRC if Altham HWRC were to close (listed as alternative):

HWRC	Properties	Current %	Alternative	Alternative %
Altham	25860	65	0	0
Great Harwood	12600	32	36342	92
Haslingden	1206	3	3324	8

Note: 39666 residential properties in Hyndburn

The table below shows the number of properties closest to HWRC at 2 mile intervals (listed as current). It also shows the number of properties closest to a HWRC if Altham HWRC closed (listed as alternative):

HWRC	2 Miles	4 Miles	6 Miles
Altham current	19366	6298	196
Altham alternative	0	0	0
Great Harwood current	11562	1038	0
Great Harwood alternative	15925	20375	42
Haslingden current	646	549	11
Haslingden alternative	646	2497	181

Map Key:

- Properties closest to Great Harwood HWRC
- Properties closest to Haslingden HWRC
- Household waste recycling centres
- 2 mile distance rings to HWRC
- Hyndburn District Boundary

This Map is reproduced from Ordnance Survey material with the permission of Ordnance Survey on behalf of the controller of Her Majesty's Stationery Office (C) Crown Copyright. Unauthorised reproduction infringes Crown Copyright and may lead to Prosecution or civil proceedings. Lancashire County Council Licence No. 100023320. Map produced by Information Governance and Directorate Support.

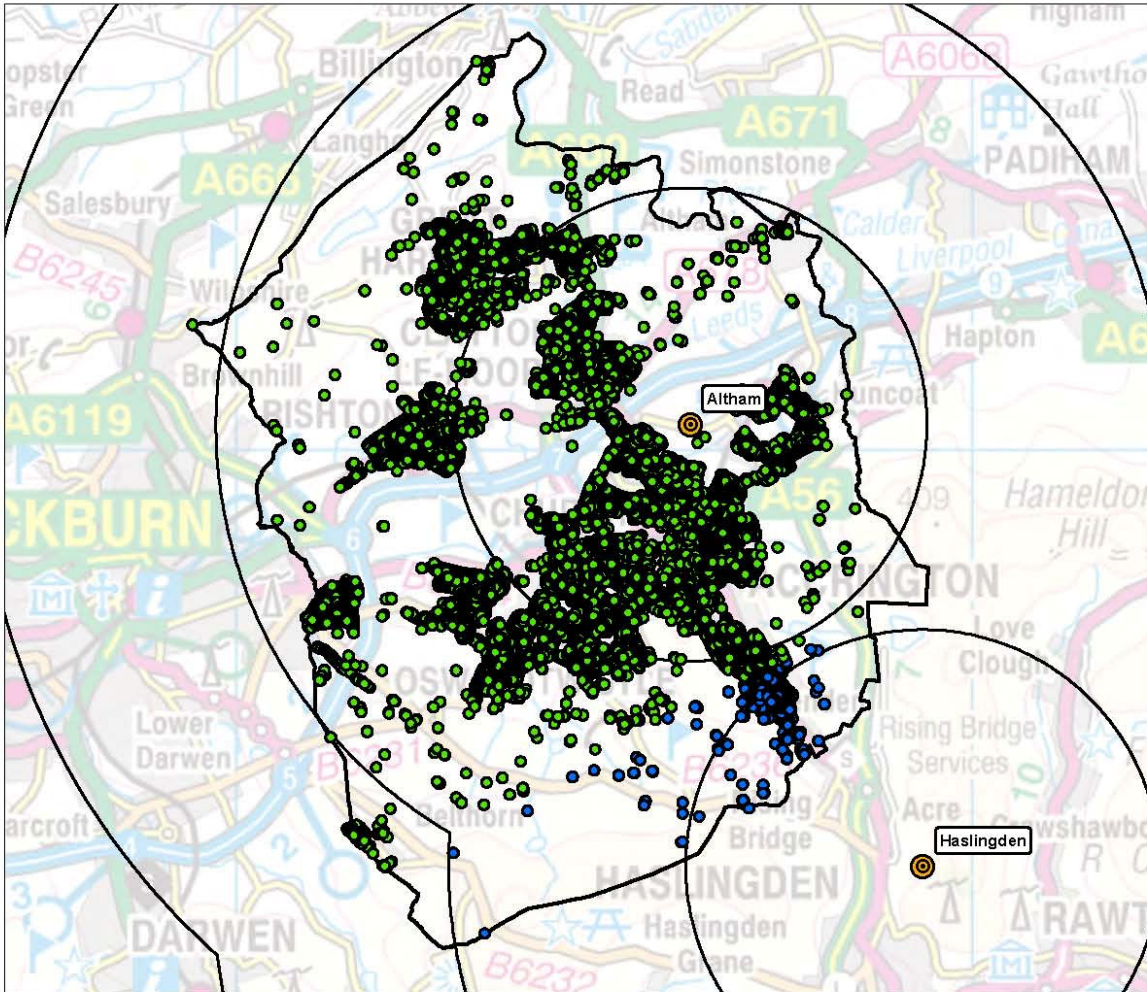
Alternative To Great Harwood HWRC



Map created : 01/03/2011



Map scale : 1:78,000



The table below shows the number & percentage of properties in Hyndburn nearest to a HWRC (listed as current). It also shows the number & percentage of properties nearest to a HWRC if Great Harwood HWRC were to close (listed as alternative):

HWRC	Properties	Current %	Alternative	Alternative %
Altham	25860	65	38460	97
Great Harwood	12600	32	0	0
Haslingden	1206	3	1206	3

Note: 39666 residential properties in Hyndburn

The table below shows the number of properties closest to HWRC at 2 mile intervals (listed as current). It also shows the number of properties closest to a HWRC if Great Harwood HWRC closed (listed as alternative):

HWRC	2 Miles	4 Miles	6 Miles
Altham current	19366	6298	196
Altham alternative	24451	13812	197
Great Harwood current	11562	1038	0
Great Harwood alternative	0	0	0
Haslingden current	646	549	11
Haslingden alternative	646	549	11

Map Key:

- Properties closest to Altham HWRC
- Properties closest to Haslingden HWRC
- Household waste recycling centres
- 2 mile distance rings to HWRC
- Hyndburn District Boundary

Alternative To Haslingden HWRC

Map created : 17/05/2011



Map scale : 1:146,483



The table below shows the number & percentage of properties in Rossendale nearest to a HWRC (listed as current). It also shows the number & percentage of properties nearest to a HWRC if Haslingden HWRC were to close (listed as alternative):

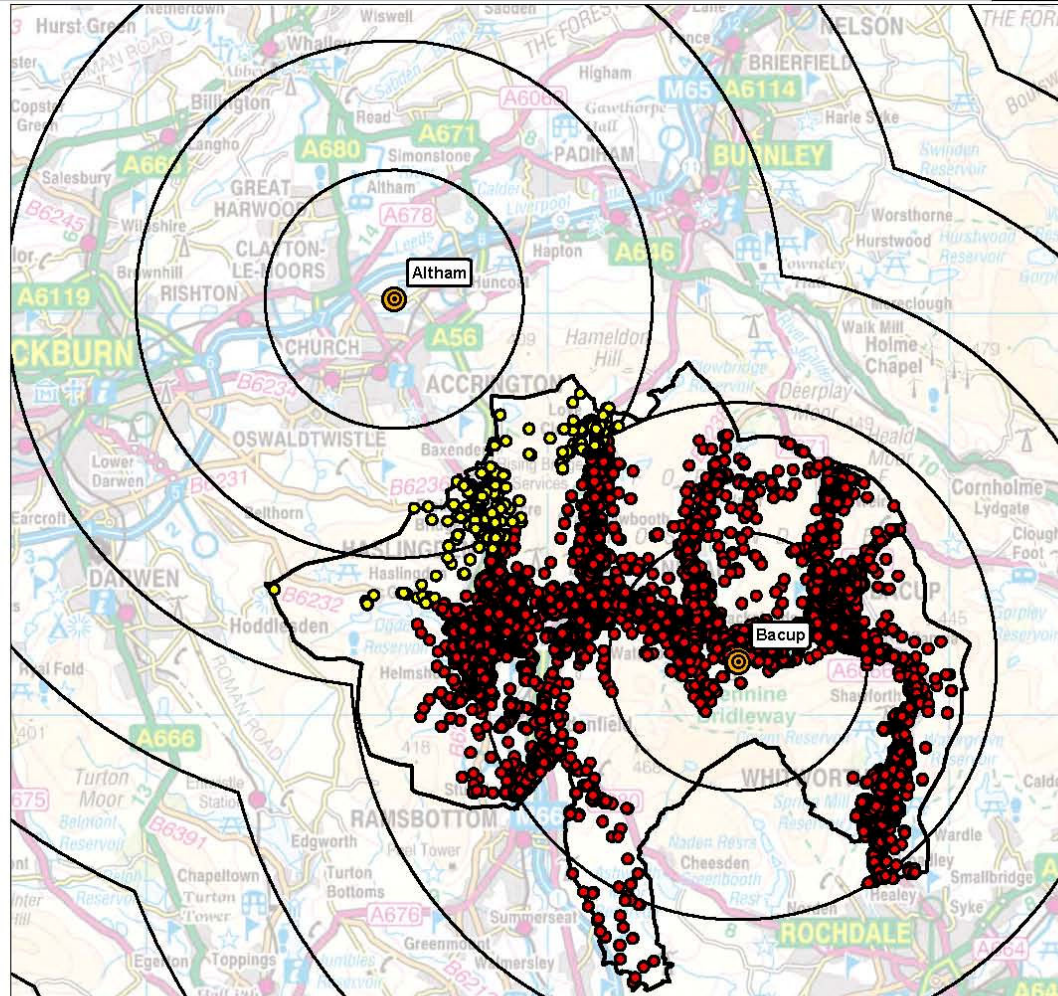
HWRC	Properties	Current %	Alternative	Alternative %
Altham	0	0	1193	4
Bacup	16058	51	30373	96
Haslingden	15508	49	0	0

Note: 31566 residential properties in Rossendale District

The table below shows the number of properties closest to HWRC at 2 mile intervals (listed as current). It also shows the number of properties closest to a HWRC if Haslingden HWRC closed (listed as alternative):

HWRC	2 Miles	4 Miles	6 Miles
Altham current	0	0	0
Altham alternative	0	1027	166
Bacup current	9938	6029	91
Bacup alternative	10000	17412	2961
Haslingden current	13289	2219	0
Haslingden alternative	0	0	0

- Map Key:**
- Household waste recycling centres
 - Properties closest to Altham HWRC
 - Properties closest to Bacup HWRC
 - Rossendale District Boundary
 - 2 Mile distance rings to HWRC



This Map is reproduced from Ordnance Survey material with the permission of Ordnance Survey on behalf of the controller of Her Majesty's Stationery Office (C) Crown Copyright. Unauthorised reproduction infringes Crown Copyright and may lead to Prosecution or civil proceedings. Lancashire County Council Licence No. 100023320. Map produced by Information Governance and Directorate Support.

Alternative To Bacup HWRC

Map created : 18/04/2011



Map scale : 1:100,000



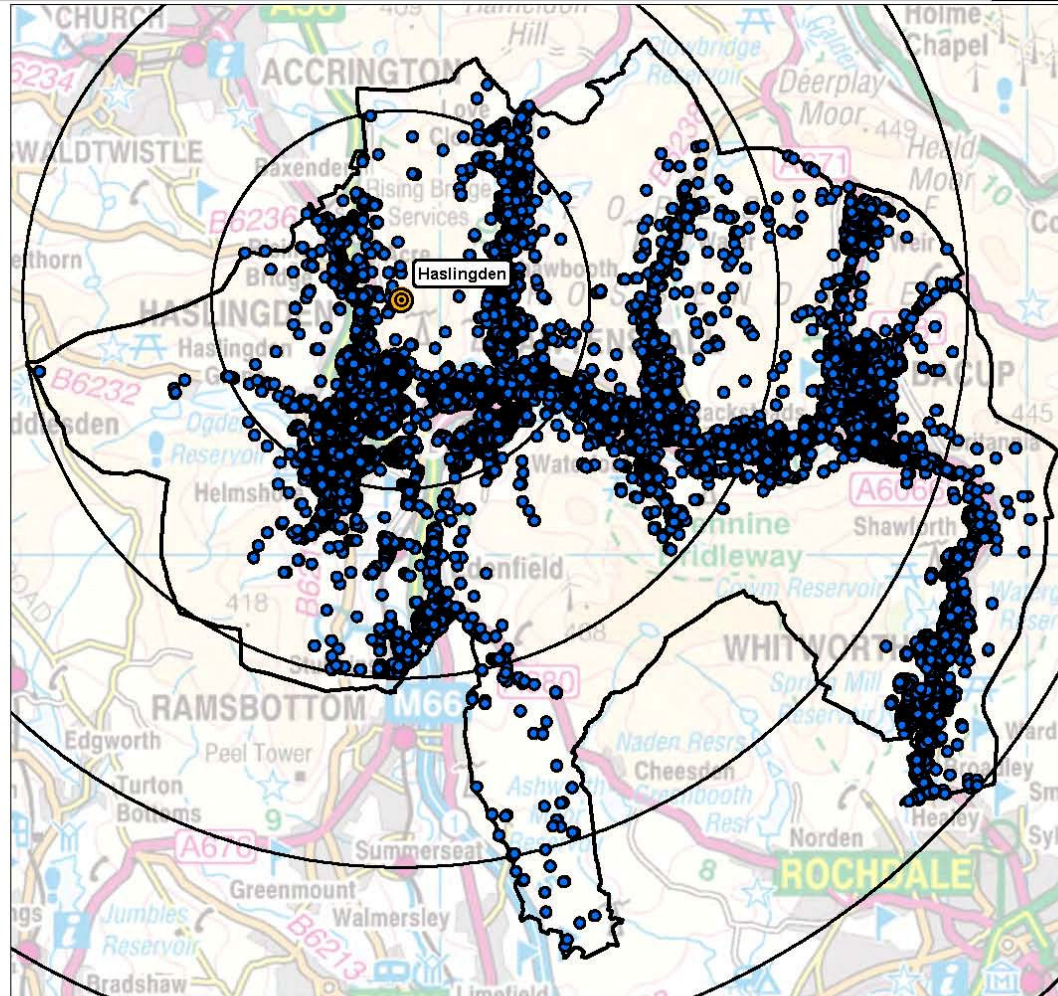
The table below shows the number & percentage of properties in Rossendale nearest to a HWRC (listed as current). It also shows the number & percentage of properties nearest to a HWRC if Bacup HWRC were to close (listed as alternative):

HWRC	Properties	Current %	Alternative	Alternative %
Bacup	16058	51	0	0
Haslingden	15508	49	31566	100

Note: 31566 residential properties in Rossendale District

The table below shows the number of properties closest to HWRC at 2 mile intervals (listed as current). It also shows the number of properties closest to a HWRC if Bacup HWRC closed (listed as alternative):

HWRC	2 Miles	4 Miles	6 Miles	8 Miles
Bacup current	9938	6029	91	0
Bacup alternative	0	0	0	0
Haslingden current	13289	2219	0	0
Haslingden alternative	13330	8065	6689	3482



- Map Key:**
- Properties closest to Haslingden HWRC
 - Household waste recycling centres
 - 2 mile distance rings to HWRC
 - Rossendale District Boundary

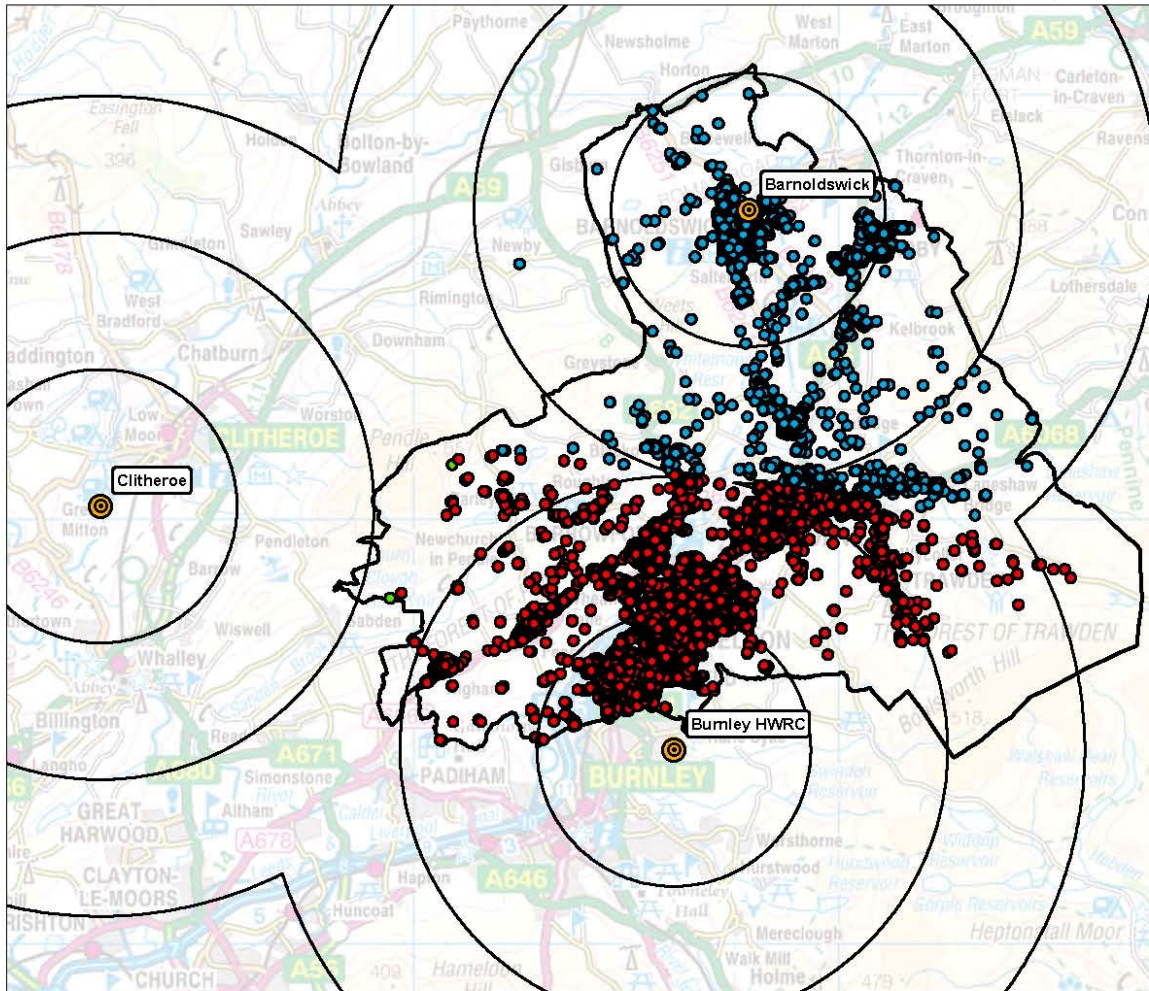
This Map is reproduced from Ordnance Survey material with the permission of Ordnance Survey on behalf of the controller of Her Majesty's Stationery Office (C) Crown Copyright. Unauthorised reproduction infringes Crown Copyright and may lead to Prosecution or civil proceedings. Lancashire County Council Licence No.100023320. Map produced by Information Governance and Directorate Support.

Alternative to Colne HWRC

Map created : 02/03/2011



Map scale : 1:135,000



The table below shows the number & percentage of properties in Pendle nearest to a HWRC (listed as current). It also shows the number & percentage of properties nearest to a HWRC if Colne HWRC were to close (listed as alternative):

HWRC	Properties	Current %	Alternative	Alternative %
Barnoldswick	6944	18	9995	26
Burnley	6595	17	27765	73
Clitheroe	1	1	3	1
Colne	24223	64	0	0

Note: 37763 residential properties in Pendle

The table below shows the number of properties closest to HWRC at 2 mile intervals (listed as current). It also shows the number of properties closest to a HWRC if Pendle HWRC closed (listed as alternative):

HWRC	2 Miles	4 Miles	6 Miles	8 Miles
Barnoldswick current	6237	703	4	0
Barnoldswick alternative	6237	1790	1968	0
Burnley current	5696	888	11	0
Burnley alternative	9637	15033	3091	4
Clitheroe current	0	0	1	0
Clitheroe alternative	0	0	3	0
Colne current	21598	2592	33	0
Colne alternative	0	0	0	0

Map Key:

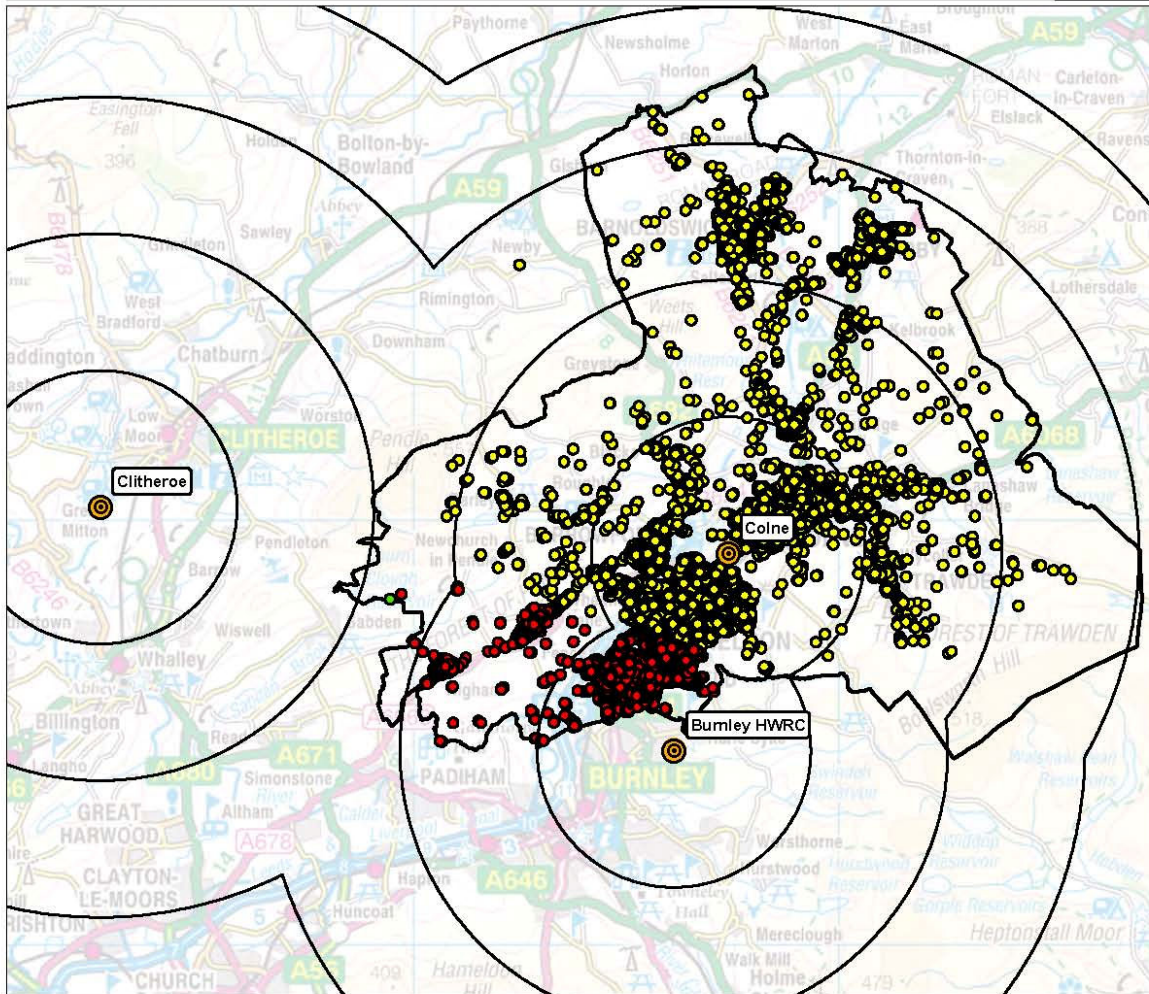
- Properties closest to Burnley HWRC
- Properties closest to Barnoldswick HWRC
- Properties closest to Clitheroe HWRC
- Household waste recycling centres
- 2 mile distance rings to HWRC
- Pendle District Boundary

Alternative to Barnoldswick HWRC

Map created : 02/03/2011



Map scale : 1:135,000



The table below shows the number & percentage of properties in Pendle nearest to a HWRC (listed as current). It also shows the number & percentage of properties nearest to a HWRC if Barnoldswick HWRC were to close (listed as alternative):

HWRC	Properties	Current %	Alternative	Alternative %
Barnoldswick	6944	18	0	0
Burnley	6595	17	6595	17
Clitheroe	1	1	1	1
Colne	24223	64	31167	82

Note: 37763 residential properties in Pendle

The table below shows the number of properties closest to HWRC at 2 mile intervals (listed as current). It also shows the number of properties closest to a HWRC if Pendle HWRC closed (listed as alternative):

HWRC	2 Miles	4 Miles	6 Miles	8 Miles
Barnoldswick current	6237	703	4	0
Barnoldswick alternative	0	0	0	0
Burnley current	5696	888	11	0
Burnley alternative	5696	888	11	0
Clitheroe current	0	0	1	0
Clitheroe alternative	0	0	1	0
Colne current	21598	2592	33	0
Colne alternative	21598	3071	6486	12

Map Key:

- Properties closest to Burnley HWRC
- Properties closest to Clitheroe HWRC
- Properties closest to Colne HWRC
- Household waste recycling centres
- 2 mile distance rings to HWRC
- Pendle District Boundary